

A Guide to Meetings, Incentives, Conferences & Events



ATLANTIS

DUBAI

Two unique properties anchored at the top of The Palm, Atlantis Dubai shakes up the world of luxury MICE, transporting the meetings, events, and incentive travel market to a new league.

The Ultimate Destination to Mix

Business with Pleasure



Why Dubai?

It's a One-Of-A-Kind Destination

1 GLOBAL & EASY ACCESS

Dubai is situated in a favourable geographical position making it accessible and affordable. You can reach 80% of the world's population in less than an 8-hour flight.

2 WORLD'S #1 MOST COSMOPOLITAN CITY - MCKINSEY & COMPANY

Home to more than 200 nationalities living in harmony and speaking more than 140 languages.

3 #8 MOST DIVERSIFIED ECONOMY - DUBAI COMPETITIVENESS REPORT

Dubai has expanded rapidly over the decades and has become synonymous with global trade epicentres, leading the world in business, finance, technology innovation, manufacturing, and tourism.

4 21ST HAPPIEST COUNTRY - WORLD HAPPINESS REPORT

Tolerant, Hospitable & Welcoming. The inclusive nature of Dubai has evolved to cater to a broader range in this multicultural environment. Put on the sky - Dubai is a unique destination as both a dynamic business centre and a leisure paradise.

"Dubai is a unique destination as both a dynamic business centre and a leisure paradise."



5 7TH SAFEST CITY IN THE WORLD - WORLD ECONOMIC FORUM

Dubai is ranked one of the safest places on the earth in terms of digital security, health security, infrastructure and ability to recover from disasters, and personal security.



ATLANTIS
THE PALM, DUBAI

Dubai's

Most Iconic Ocean-themed Resort Destination

With a wide variety of innovative and awe-inspiring experiences, discover an extraordinary world filled with thrilling water adventures, divine restaurants by world-renowned chefs, spectacular nightlife and events for all.



Rooms & Suites at Atlantis, The Palm

You and your guests will experience ultimate relaxation in our recently refreshed Rooms, Suites and world-famous Signature Suites, complete with our hallmark features and amenities.

NO. OF ROOMS: 1,544

ROOM TYPE	NO. OF ROOMS	ROOM SIZE
Ocean Guest Room	532	46 sqm
Palm Guest Room	460	
Family Room	60	92 sqm
Imperial Club Room	326	46 sqm
Terrace Suite	30	94 sqm
Skyline Suite	19	101 sqm
Regal Suite	8	164 sqm
Two Bedroom Terrace Suite	52	140 sqm
Two Bedroom Skyline Suite	23	147 sqm
Two Bedroom Regal Suite	28	210 sqm
Presidential Signature Suite	2	220 sqm
Underwater Signature Suite	2	165 sqm
Grand Atlantis Signature Suite	2	429 sqm

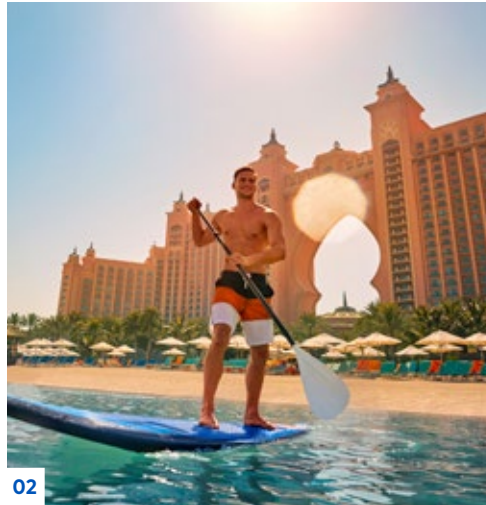


All rooms offer either partial views of the Arabian Sea or Palm Island.
All rooms equipped with safes, iron, iron board, tea and coffee making facilities, bath robes, separate bath and shower, 24hr room service.

A Place Where Extraordinary Things Happen

Take the team for a fun day out

- 01 | All guests enjoy complimentary access to Aquaventure Waterpark, the world's largest waterpark! Thrill-seekers can defy gravity on 30 record-breaking slides
- 02 | Adrenaline-fuelled fun with plenty of water sports and recreational activities
- 03 | Guests will also enjoy complimentary entrance to The Lost Chambers Aquarium, home to 65,000 marine animals.
- 04 | Tick off bucket list experiences and meet our friendly dolphins and sea lions





Where The
Impossible
Becomes
Possible

For an event that's a little more unique, The Lost Chambers Aquarium provides a mesmerising setting with the mythical Ambassador Lagoon as your backdrop. In front of 65,000 marine animals, elevate the experience of your guests with a cocktail reception, product launch or an extra special celebration.

Serving You The Extraordinary

EVENTS

Every event should be one to remember. From meaningful milestone celebrations, to gala dinners, weddings, workshops and conferences, our enviable location atop the iconic Palm Island guarantees your function will be a landmark occasion.

- ▶ For a special day or once-in-a-lifetime opportunity to celebrate with family, friends or colleagues, Atlantis, The Palm takes you a world away from your everyday, where every memory lasts a lifetime
- ▶ For an intimate setting, host your amazing event in one of our award-winning or celebrity chef restaurants, such as Nobu by Chef Nobu Matsuhisa, or Bread Street Kitchen by Gordon Ramsay.



Incentives

Go the extra mile for your colleagues and clients by treating them to a once-in-a-lifetime stay at the iconic Atlantis, The Palm.

- ▶ The landmark destination's unique and immersive experiences will inspire and incentivise your employees, driving employee engagement and motivating them to deliver results
- ▶ A playground for adults with uplifting activities and opportunities to impress everyone, from swimming with dolphins to jet skiing in the Arabian Sea and zipping down the world's biggest waterslide, your company's top performers will leave our hotel with their spirits high





Flexible Solutions to Any Event

INDOOR EVENTS

Asateer is the flagship venue for large scale events

This specially constructed marquee tent is set by the ocean with dazzling views of Dubai's skyline. An original way to share a piece of the UAE's heritage with your event guests, the space comprises a spacious lobby lounge, an 11-metre-high ceiling and dedicated valet parking. Its capacious carpark also makes it a convenient and easily accessible choice. For large staged events such as fashion shows, Ramadan dinners, awards ceremonies or special celebrations, Asateer was designed for unforgettable occasions.

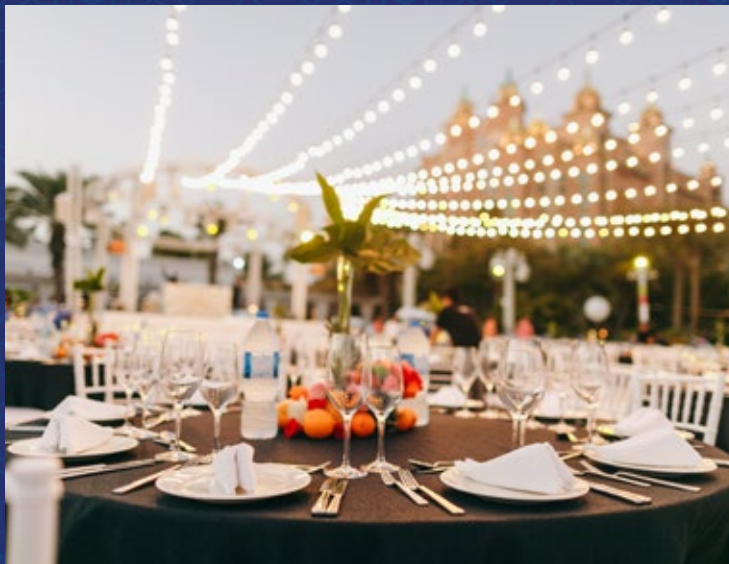
Indoor Events

- ▶ The Conference Centre consists of 13 meeting rooms, three ballrooms and a boardroom providing flexible solutions to any event
- ▶ The largest function room, the Atlantis Ballroom, can accommodate up to 2,000 guests or can be subdivided specifically to your needs. With its own private entrance, it gives guests easy access and convenience to enter and leave the property
- ▶ The Spice Ballroom and the Silk Ballroom are two smaller function rooms that can equally be subdivided to provide you with just the right amount of space for your function. Equipped with the latest technical equipment and a private bathroom, the Andes Boardroom is an ideal setting for corporate meetings



Outdoor Events

- ▶ Under the dreamy Dubai sky, with a view of Palm Island and the spectacular skyline, Atlantis, The Palm offers outdoor venues that wow
- ▶ The Royal Terrace, with a private entrance in the West Tower, is an exclusive spot for a pre-function gathering, an afternoon break or a stand-up reception
- ▶ Choose from a beach or a pool side for fun festivities under the stars. For the young at heart, Atlantis, Aquaventure's Tower of Neptune is an edgy backdrop for an out-the-box event
- ▶ Whether your event is dressed up or dressed down with toes in the sand, our captivating outdoor venues are havens of hospitality



Overview of Conference Facilities

13 MEETING ROOMS

- Total meeting area – 5,544sqm (60,278 sq ft)
- Ballrooms are divisible in up to 5 separate rooms
- Ceiling area spans 2,100 sqm
- 3-phase power
- Adjustable mood lighting
- High-speed Internet access

ATLANTIS BALLROOM

- 8m high ceilings
- Themed décor
- No pillars obstructing view
- Accommodates gala dinner for up to 1,500 guests
- Direct access to Royal Terrace
- LCD screens outside each door
- Full in-house rigging services
- Plentiful hanging points
- Can be divided into 5 sections

SPICE BALLROOM

- Bright and airy
- Pre-function area
- Andes Boardroom adjacent
- Private terrace
- LCD screens outside each door
- Can be divided into 3 sections

SILK BALLROOM

- Conveniently located between 2 ballrooms
- Can be used with Spice & Atlantis Ballroom for breakout rooms
- LCD screens outside each door
- Can be divided into 3 sections

ASATEER

- Seats 1,500 for dinner and 2,500 cocktail style
- 11 metre high ceiling
- Spacious lobby lounge
- Ample car parking via a private entrance

ANDES BOARDROOM

- Natural daylight
- Private bathroom
- Ideal for important meetings
- Adjacent to Spice Ballroom - ideal breakout room
- Direct access to Royal Terrace
- LCD screens outside each door

ROYAL TERRACE

- Spectacular view of Dubai's Skyline
- Views of Dubai Marina

ROYAL BEACH

- Large expanse of beachfront for tailor-made events
- Views of Dubai's Skyline

THE LOST CHAMBERS AQUARIUM

- Unique cocktail receptions / product launches

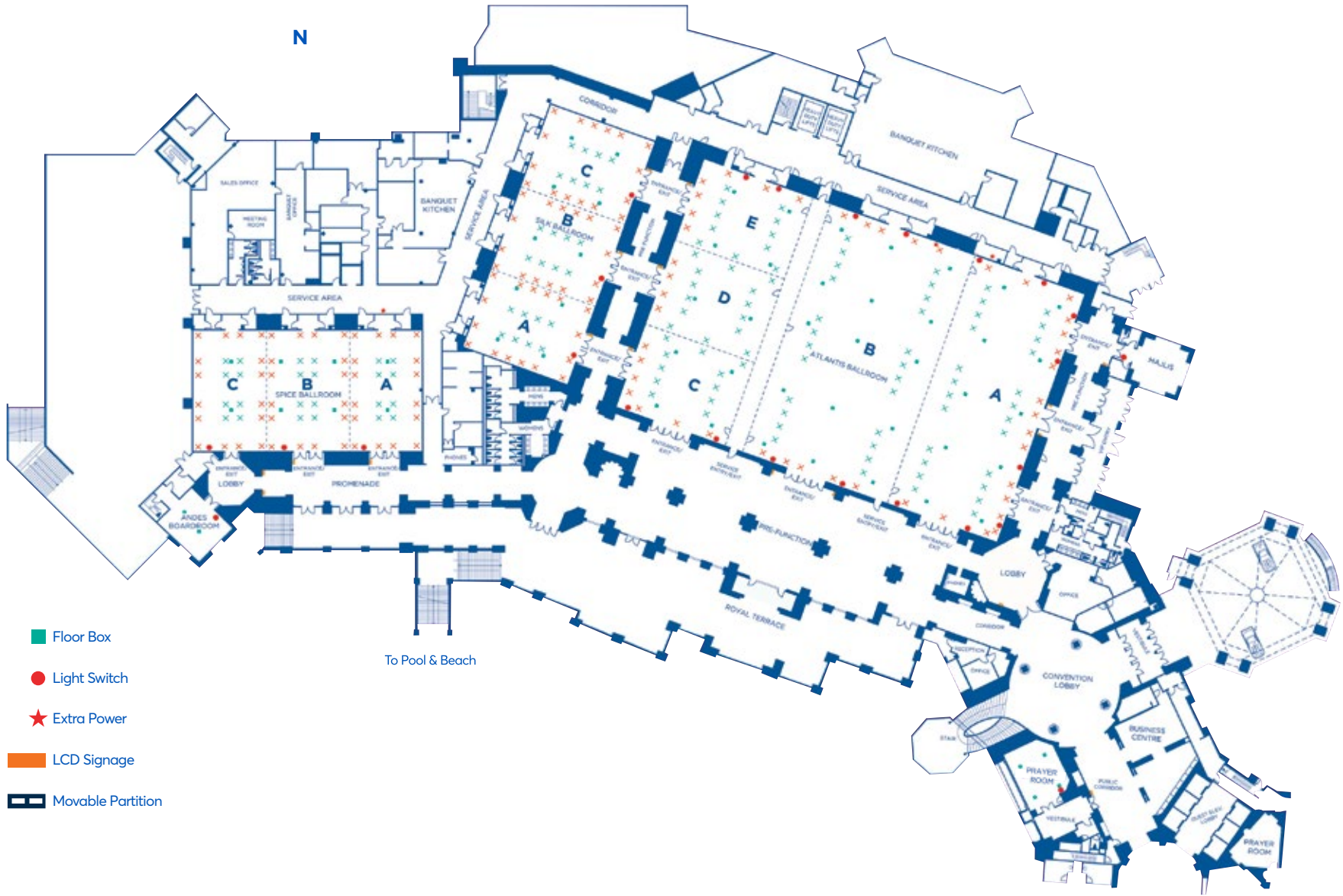
AQUAVENTURE WATERPARK

- Ideal for a team building or gala dinner

OTHER VENUES

- 10 restaurants for private events

Conference Centre



- Floor Box
- Light Switch
- ★ Extra Power
- ▭ LCD Signage
- Movable Partition

	Dimensions				Capacities							
	Area	Height	Length	Width	Reception	Set Dining	Buffet	Cabaret	Theatre	Classroom	Boardroom	U Shape
A Atlantis Ballroom	2100m ²	8.75m	36.9m	56.9m	2500	1500	1200	1050	2050	1050	360	400
Divisible by 3												
A	601m ²	8.75m	36.9m	16.3m	675	390	305	273	450	300	100	120
B	797m ²	8.75m	36.9m	21.6m	975	540	440	378	600	450	160	180
CDE	601m ²	8.75m	36.9m	16.3m	675	390	305	273	450	300	100	120
CDE divisible by 3												
C	200m ²	8.75m	12.3m	16.3m	240	130	100	91	150	80	30	40
D	200m ²	8.75m	12.3m	16.3m	240	130	100	91	150	80	30	40
E	200m ²	8.75m	12.3m	16.3m	240	130	100	91	150	80	30	40
B Silk Ballroom	540m ²	3.7m	15m	36m	600	250	210	175	300	195	75	90
Divisible by 3												
A	177m ²	3.7m	15m	11.8m	200	70	70	56	100	65	25	30
B	177m ²	3.7m	15m	11.8m	200	70	70	56	100	65	25	30
C	177m ²	3.7m	15m	11.8m	200	70	70	56	100	65	25	30
C Spice Ballroom	538m ²	3.7m	16.8m	32m	600	250	210	175	300	195	75	90
Divisible by 3												
A	176m ²	3.7m	16.8m	10.5m	200	80	70	56	100	65	25	30
B	176m ²	3.7m	16.8m	10.5m	200	80	70	56	100	65	25	30
C	176m ²	3.7m	16.8m	10.5m	200	80	70	56	100	65	25	30
D Prayer Room	56m ²	3.6m	8m	7m	-	-	-	-	-	-	-	-
E Andes Ballroom	52m ²	4.4m	6.5m	8m	-	12	10	-	-	-	12	-
F Majlis	36m ²	5m	6m	6m	30	10	10	7	10	-	-	-
G Pre-function	1000m ² ^	8.75m	-	-	700	-	-	-	-	-	-	-
H Royal Terrace	630m ² °	-	-	-	250	200	150	-	-	-	-	-
I Asateer	2400m ² §	3m*	60m	40m	2100	1200	1000	-	-	-	-	-

^ usable space, including corridors, ° depends on section, supplied upon request. § comprises Internet booth 30m², reception area 45m². * Minimum ceiling height – 9.2 max
 NB: The capacities are based on empty rooms. Dimensions listed are strictly for guide purposes only.

Dining Experiences

at Atlantis, The Palm

Besides being the stage for phenomenal events and conferences, Atlantis, The Palm is home to 32 award-winning restaurants, bar and lounges. Enjoy worldly cuisines from renowned celebrity chefs to casual settings. The portfolio is endless and will serve you and your guests the extraordinary.

CELEBRITY CHEF RESTAURANTS



GORDON RAMSAY

BREAD STREET

KITCHEN & BAR

Iconic British dishes with a modern take by celebrity chef Gordon Ramsay



Sublime Japanese-Peruvian cuisine from acclaimed chef Nobu Matsuhisa

Dining Experiences

at Atlantis, The Palm

CELEBRITY CHEF RESTAURANTS



OSSIANO
UNDERWATER
BAR & RESTAURANT

Fine-dining by Chef Gregoire Berger with scenic underwater views




HAKKASAN

Michelin Star restaurant offering Cantonese recipes with contemporary techniques

Dining Experiences

at Atlantis, The Palm

SIGNATURE RESTAURANTS



SEAFIRE
STEAKHOUSE & BAR

Award-winning steakhouse serving exceptional cuts of meat



WHITE
BEACH

Trendy Mediterranean restaurant anchored by an excellent selection of seafood signatures



WAVEHOUSE
ATLANTIS, THE PALM

Entertainment destination combining live music, gaming, bowling, food and drinks

Dining Experiences at Atlantis, The Palm

CASUAL RESTAURANTS



Asian street food and sharing dishes



Signature burgers and freak shakes that are famous for their picture-worthy looks



The best Arabic street food from an eclectic eatery



Craft burgers, delicious fries and rich milkshakes



Relaxed poolside grill and bar serving light lunch and snacks



Tex-Mex cuisine at a breezy poolside bar

BUFFET RESTAURANTS



SAFFRON

Take a journey throughout Asia, meeting the wonders of twenty theatrical cooking stations



All-day dining at its absolute best with options so extensive you won't know where to start

Resort Map



DINING, BARS & LOUNGES

- 5 WHITE Restaurant
- 6 Beach Buns
- 10 Saffron
- 16 The Edge
- 23 Plato's Lobby Lounge
- 28 Ayanna
- 30 Arabian Terrace
- 30 Imperial Club Lounge
- 32 The Shore
- 35 Ossiano
- 36 Poseidon Café
- 37 Kaleidoscope
- 38 Nobu
- 42 Bread Street Kitchen & Bar
- 42 Street Pizza
- 42 Shawafel
- 42 Asia Republic
- 42 Wavehouse
- 42 TBJ - The Burger Joint
- 42 Seafire Steakhouse & Bar
- 42 Wavehouse
- 44 Starbucks
- 45 Hakkasan

LEISURE & ENTERTAINMENT

- 1 Asateer Tent
- 4 Tennis Academy
- 7 Pool Club House
- 9 Little Pirates Playground
- 13 Palm Grove
- 14 ShuiQi Spa & Fitness
- 15 Nailology
- 15 Atlantis Kids Club
- 34 The Zone
- 40 The Lost Chambers Aquarium
- 40 Little Atlantis Playground
- 40 Atlantis Aquaventure Ticketing Plaza

POOLS, BEACH & WATERSPORTS

- 3 WHITE Beach Club
- 8 Zero Entry Pool
- 12 Imperial Club Beach
- 23 Royal Pool
- 24 Royal Pool & Beach
- 48 Watersports

SHOPPING

- 11 WHITE Beach Boutique
- 19 Toy Kingdom
- 21 The Lost Chambers Boutique
- 25 Zero Entry Pool Kiosks
- 39 Legends of Atlantis
- 41 Royal Pool Kiosks
- 41 Marina Pharmacy
- 46 The Avenues

GUEST SERVICES

- 2 Atlantis The Royal | Sales Suite
- 17 Resort Activity Booking Point | West Tower
- 18 Atlantis Lost & Found
- 20 Medical Clinic (lower level)
- 22 Royal Majlis - VIP Lounge
- 26 Concierge Lounge
- 31 Resort Activity Booking Point | East Tower

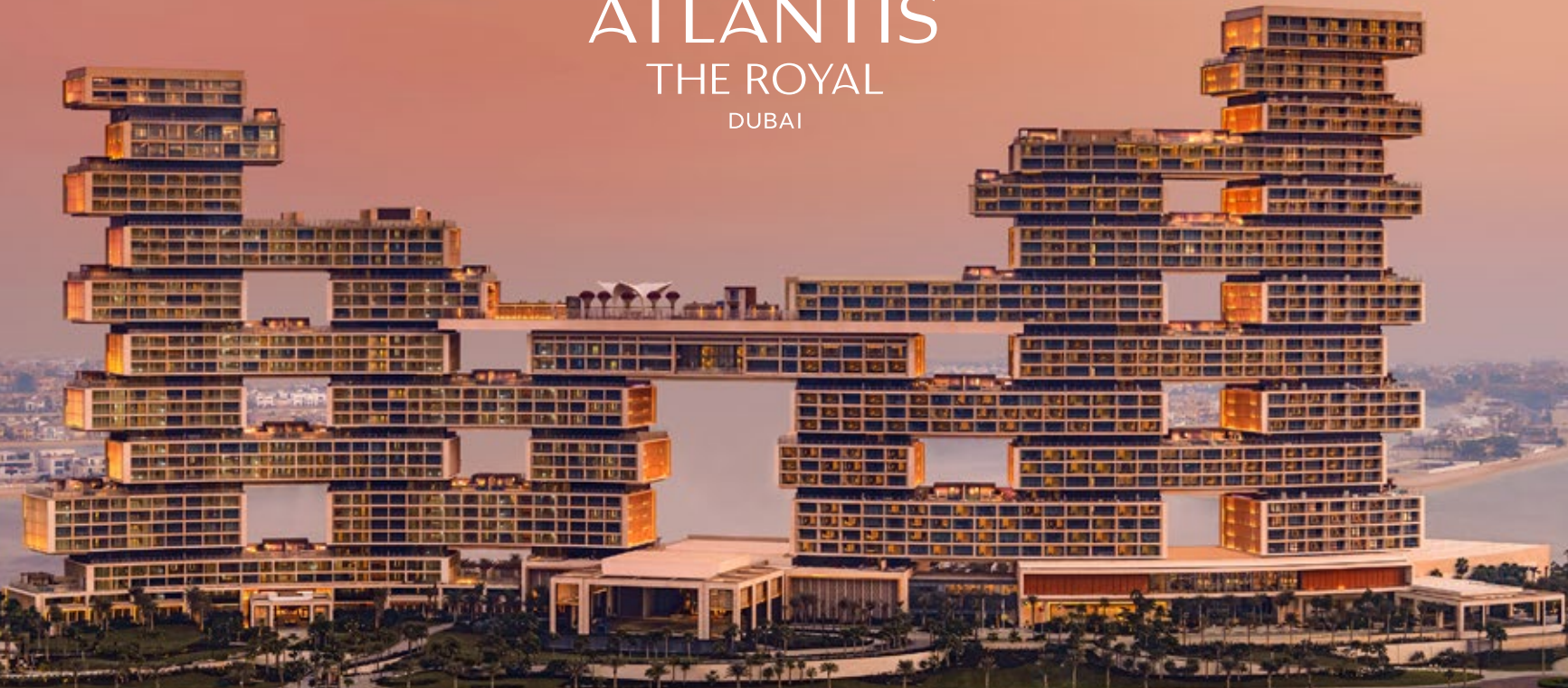
POINTS OF INTEREST

- First Aid
- Monorail Station
- Towel Cabana
- Washrooms
- Buggy Stop
- Aquaventure Waterpark and WHITE Beach Parking
- Cash Withdrawal
- Prayer Rooms
- Atlantis Helipad

Note: This illustration of Atlantis, The Palm and Atlantis Aquaventure is not drawn to scale and bears no accuracy. It is for reference only. Information is subject to change without prior notice.



ATLANTIS
THE ROYAL
DUBAI



ATLANTIS THE ROYAL WILL

FOREVER CHANGE

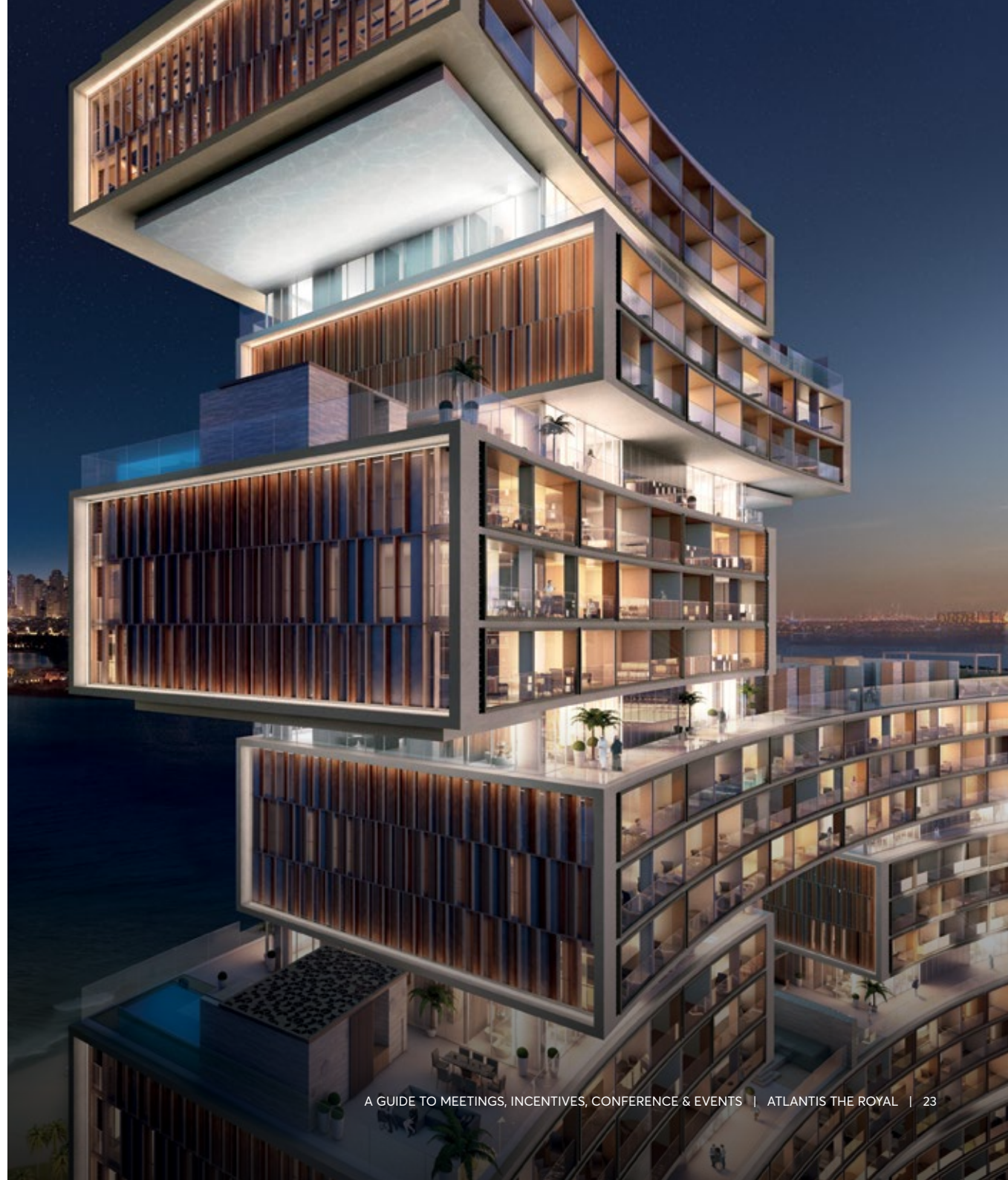
THE LANDSCAPE OF DUBAI

Crafted by the world's leading designers, architects and artists, this iconic resort will offer extraordinary stays with infinite ocean and skyline views, unparalleled dining experiences, attractions, entertainment & nightlife.

BE ONE OF THE
**FIRST IN
THE WORLD**

TO HOST A COVETED EVENT
AT A PIONEERING NEW HOTEL

With its striking lobby home to one of the largest jellyfish tanks in the world, along with the city's most dramatic sky pools and some of the region's most exciting new restaurants, the diverse range of entertainment and networking spaces at Atlantis The Royal provide novelty and inspiration for all attendees.



ROOMS, SUITES & SIGNATURE PENTHOUSES

Atlantis The Royal is home to a total of 795 rooms, with 102 unique Suites, 44 with infinity pools, providing complete privacy and relaxation. Our Guest Rooms represent the absolute pinnacle of modern contemporary opulence, designed to immerse guests in absolute comfort and unparalleled luxury. All Guest Rooms and Suites have spectacular views of the Palm Island and Arabian Sea.

Guest can experience the world's most iconic stay in one of Atlantis The Royal's 6 Signature Penthouses. With hand-crafted décor, elevated service and bespoke amenities, private infinity pools and expansive terraces, magic is made here. The bedrooms and bathrooms are built for royalty, while the lounge and dining areas deliver that home away from home feeling. These dream Signature Penthouses are kingdoms made of surprises, adventure and opulence all in one, unlike anywhere else in the world.

NO. OF ROOMS: 795

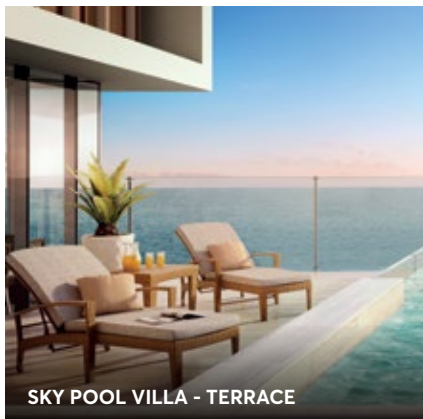
3 Resort Towers

- ▶ Sunset: 360 Rooms & Suites
- ▶ Sunlight: 300 Rooms & Suites
- ▶ Sunrise: 135 Rooms & Suites

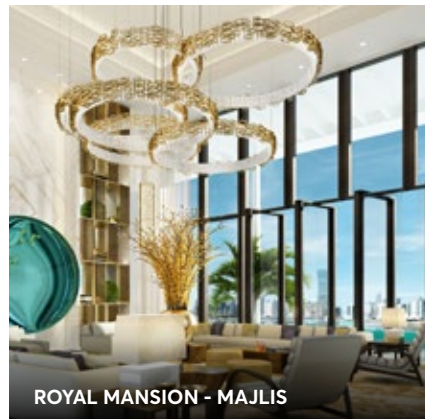
6 Signature Penthouses | 96 Suites | 180 Royal Club | 513 Guest Rooms



SKY POOL VILLA - BEDROOM



SKY POOL VILLA - TERRACE



ROYAL MANSION - MAJLIS

With its iconic design and unparalleled architectural structure, Atlantis The Royal delivers the flexibility guests need when choosing their ultimate holiday destination. With a variety of connecting options available, from privatising entire floors to finding the perfect combination of Suites and Rooms for groups and larger families - Atlantis The Royal delivers the perfect stay for every occasion.

STAYS

AT ATLANTIS THE ROYAL

ROOM TYPE	NO. OF ROOMS	ROOM SIZE	CONNECTING OPTION
Seascope King	133	55m ² + 9m ² balcony*	Connects to Seascope Queen
Palmscope King	112		Connects to Palmscope Queen
Seascope Queen	151		Connects to Seascope King
Palmscope Queen	117		Connects to Palmscope King
Royal Club King	81		Connect to Queen Room
Royal Club Queen	99		Connects to King Room
Junior Sky View Suite	08	78m ² + 18m ² terrace	n/a
Sky Terrace Family Suite	50	100m ² + 119m ² terrace*	Cross-corridor connection to King and/or Queen Rooms for: 2-bedroom Sky Terrace Suite (15 available) 3-bedroom Sky Terrace Suite (5 available)
Sky Pool Villa	38	118m ² + 168m ² terrace*	Connects to another Sky Pool Villa (17 available) and 2 queen rooms
Skyscape Penthouse	03	185m ² + 336m ² terrace*	n/a
Horizon Penthouse	01	261m ² + 207m ² terrace	No direct connection available, yet possible to privatise the whole floor to include: Horizon Penthouse, 1 Sky View Suite, 1 Sky Terrace Suite, 1 Queen Room, and 1 King Room
Panoramic Penthouse	01	520m ² + 209m ² terrace	n/a
Royal Mansion	01	1,128m ² + 476m ² terrace	Will always be given connecting Queen Room. Option to connect to 1 Queen Room and 1 King Room on the 19th floor.

*Average size for this room category.



WITH ONE-OF-A-KIND SETTINGS

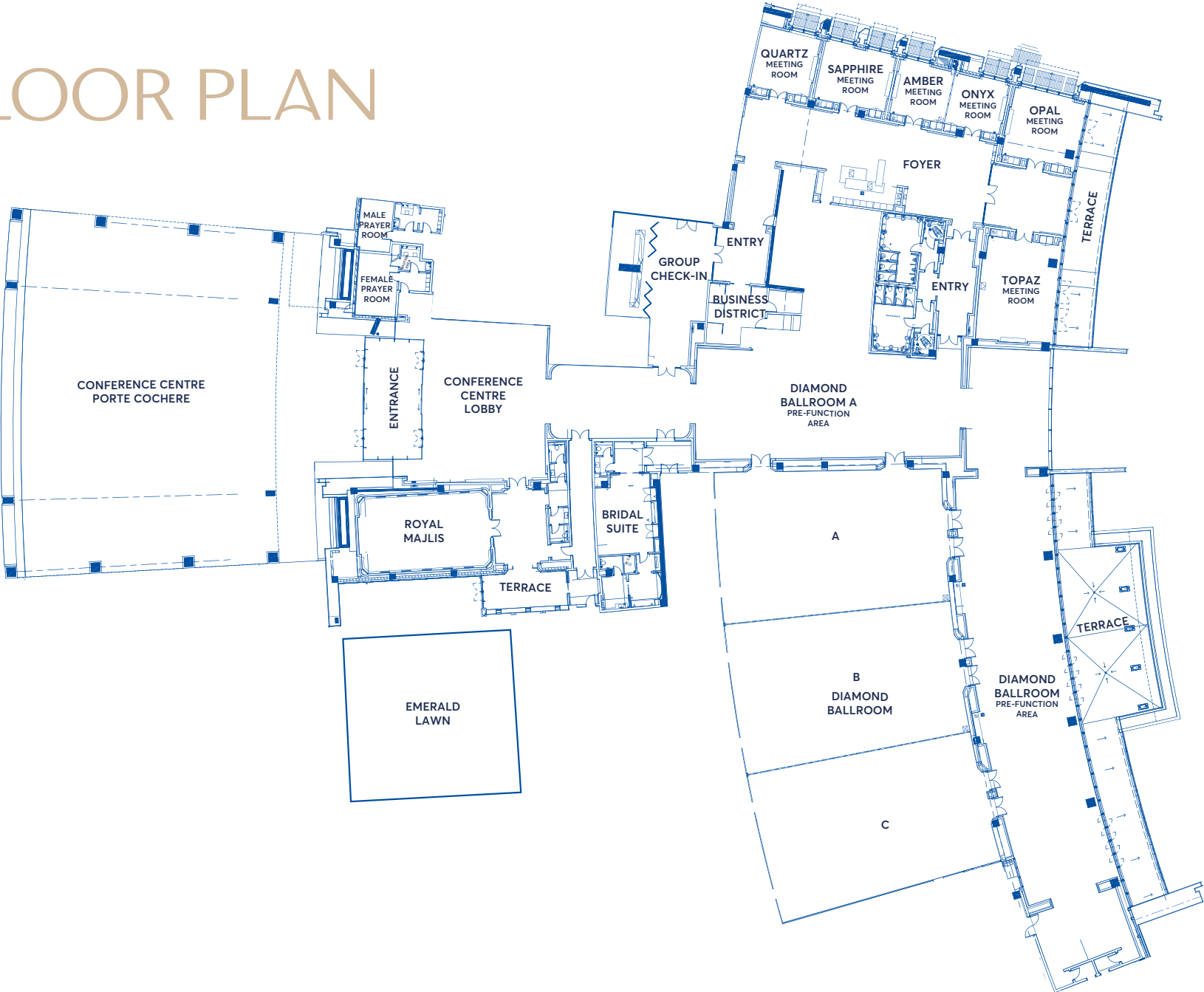
SUPPORTED BY STELLAR SERVICE, WE DESIGN
EVENTS TO HELP YOU TELL YOUR UNIQUE STORY

- ▶ The multi-functional Ballroom, which can be divided into 3 completely separate spaces with individual entrances and service doors, is effortlessly elegant. At 1,000 square metres, it can comfortably sit 660 guests with a variety of seating plan options tailored to your event
- ▶ The Business District on the Galleria Level comes complete with a lounge, safety deposit box and 6 state-of-the-art meeting rooms that range from 29 square metres to 84 square metres in size, accommodating up to 12 guests per room. All can be configured in a range of different ways to suit your event. Aside from an extensive spread of culinary delights to appeal to all tastes, guests will also benefit from on-site technical expertise, state-of-the-art Audio Visual equipment and high-speed Wi-Fi making connectivity seamless
- ▶ For an extra special gathering in an intimate venue, our VIP Majlis – a traditional Arabian-styled welcome lounge – has its own private porte cochère and entrance and can accommodate up to 20 guests. The tasteful décor with its striking lighting fixtures and light-refracting mirror, complements the floor-to-ceiling windows that infuse the room with natural light

CONFERENCE CENTRE

Conference Centre Lobby	Galleria Level	<ul style="list-style-type: none"> • Conference Centre Port Cochère • 3 vehicle lanes • 2 Reception counters 	
Ballrooms	Galleria Level	<ul style="list-style-type: none"> • Main Ballroom, which can be split into 3 sections with individual entrances and service doors 	<ul style="list-style-type: none"> • Seating capacity approx. 660 • Size approx. 1,000 m²
Meeting Rooms	Galleria Level	<ul style="list-style-type: none"> • 6 Meeting Rooms with reception • Business District Lounge 	<ul style="list-style-type: none"> • Ave. seating 12 guests per room • Coffee/tea + snack station
Business District	Galleria Level	<ul style="list-style-type: none"> • Same entry to Meeting Rooms • 3 workstations (PC + printer) • Safety Deposit Box 	<ul style="list-style-type: none"> • Size approx. 40 m²
VIP Majlis	Galleria Level	<ul style="list-style-type: none"> • Private VIP Porte Cochère • Private Reception and Majlis 	<ul style="list-style-type: none"> • Size approx. 150 m² • Seating capacity approx. 20
Bridal Suite	Galleria Level	<ul style="list-style-type: none"> • Dressing room with walk-in wardrobe and vanity • Hair salon and shower • Majlis seating area convertible to dining area 	<ul style="list-style-type: none"> • Size approx. 80 m² • Seating capacity approx. 10

FLOOR PLAN



CONFERENCE CENTRE

Room Name	Dimensions	Ceiling	Area	Reception	Banquet	Theater	Classroom	Boardroom	U Shape
Amber	6.6m x 5.9m	3.0m	35.40 m ²	0	0	0	0	12	0
Amber + Onyx	6.6m x 11.6m	3.0m	69.53 m ²	0	0	0	0	24	0
Business District Terrace	4.2m x 24.9m	0.0m	90.20 m ²	100	0	0	0	0	0
Diamond Ballroom	61.0m x 121.9m	8.5m	1,018.80 m ²	1,200	660	1173	648	0	102
Diamond Ballroom A	24.1m x 16.0m	8.5m	341.70 m ²	400	216	414	234	0	78
Diamond Ballroom AB	24.4m x 31.3m	8.5m	680.10 m ²	800	378	748	396	0	96
Diamond Ballroom B	24.1m x 15.5m	8.5m	338.40 m ²	400	180	414	234	0	78
Diamond Ballroom BC	24.4m x 30.9m	8.5m	677.10 m ²	800	378	748	396	0	0
Diamond Ballroom C	24.1m x 15.5m	8.5m	338.70 m ²	400	162	412	231	0	0
Diamond Ballroom Main Foyer	27.6m x 13.3m	8.5m	301.10 m ²	300	0	0	0	0	0
Diamond Ballroom Terrace	8.6m x 44.7m	8.5m	239.40 m ²	250	0	0	0	0	0
Diamond Ballroom Pre-Function	61.0m x 121.9m	8.5m	601.20 m ²	500	0	0	0	0	0
Emerald Lawn	16.7m x 28.9m	0.0m	483.20 m ²	500	280	552	288	0	0
Onyx	6.3m x 5.8m	3.0m	34.10 m ²	10	0	0	0	10	0
Opal	8.0m x 7.8m	3.0m	56.50 m ²	0	0	0	0	18	0
Quartz	7.2m x 6.3m	3.0m	42.54 m ²	0	0	0	0	10	0
Sapphire	7.0m x 7.5m	3.0m	47.87 m ²	0	0	0	0	10	0
Topaz	11.4m x 8.2m	3.0m	83.58 m ²	0	60	56	36	18	24

DINING EXPERIENCE

AT ATLANTIS THE ROYAL

A culinary destination in itself, Atlantis The Royal is home to 18 restaurants and bars with 8 celebrity chef restaurants.



D | I N N E R
by heston blumenthal

Ultra-refined dining experience with dishes inspired by recipes dating back to England during the 14th Century.

Operating Hours: Dinner, daily
Seating Capacity: 178 guests
Indoor: 146 guests | Outdoor: 32 guests

la
mar | gastón
acurio

Celebrating the authentic and diverse flavours of Peruvian gastronomy with the first traditional cebicheria in Dubai.

Operating Hours: Dinner, daily
Seating Capacity: 197 guests
Indoor: 142 guests | Outdoor: 55 guests

JALEO
BY JOSÉ ANDRÉS

Imagined through the creative lens of chef José Andrés, Jaleo showcases the traditional and cutting-edge flavours of Spain.

Operating Hours: Dinner, daily
Seating Capacity: 253 guests
Indoor: 154 guests | Outdoor: 99 guests

DINING EXPERIENCE

AT ATLANTIS THE ROYAL



Modern and refined take on the ancient and authentic Persian cuisine served family-style.

Operating Hours: Dinner, daily
Seating Capacity: 182 guests
Indoor: 110 guests | Outdoor: 72 guests



One of the finest Mediterranean seafood restaurants with uninterrupted views of Skyblaze Fountain.

Operating Hours: Lunch & Dinner, daily
Seating Capacity: 345 guests
Indoor: 169 guests | Outdoor: 176 guests



LITTLE VENICE
CAKE COMPANY
DUBAI

Award-winning cake designs by baker to the stars and international royalty, 'The Queen of Couture Cakes' Mich Turner.

Operating Hours: Daily

DINING EXPERIENCE

AT ATLANTIS THE ROYAL



GASTRONOMY

All-day dining restaurant featuring a wide variety of live cooking stations and cuisines.

Operating Hours: Breakfast & Dinner, daily

Seating Capacity: 960 guests

Indoor: 650 guests | Outdoor: 310 guests



MALIBU

90265

1950s-style American diner serving era classics such as burgers, milkshakes, soda floats and more.

Operating Hours: Lunch & Dinner, daily

Seating Capacity: 169 guests

Indoor: 93 guests | Outdoor: 76 guests



The Royal Tearoom

Upper-scale lounge serving a luxury afternoon tea in collaboration with the 'Queen of Couture Cakes' Mich Turner, and all day light snacks and refreshments.

Operating Hours: All-day, daily

Seating Capacity: 136 guests

Indoor: 136 guests

DINING EXPERIENCE

AT ATLANTIS THE ROYAL



FOOD MARQUET

An ultimate flavour haven and awe-inspiring open-air venue serving up a variety of street foods and international delicacies.

Operating Hours: Lunch, daily
Seating Capacity: 170 guests
Outdoor: 170 guests



HOUSE OF DESSERTS

Home to Dubai's finest artisan gelato, a result of carefully chosen ingredients, genuine craftsmanship, and the science and creativity of our chefs

Operating Hours: Lunch, daily
Seating Capacity: 30 guests
Indoor: 30 guests

ATLANTIS THE ROYAL DUBAI

DINING, BARS & LOUNGES

- | | |
|-------------------------------|-----------------------------------|
| 1 Jaleo | 10 Cloud 22 |
| 2 Milos | 11 Nobu by the Beach |
| 3 La Mar | 12 Resonance by Heston Blumenthal |
| 4 Dinner by Heston Blumenthal | 13 Elements Terrace |
| 5 Ling Ling | 14 The Royal Tearoom |
| 6 Ariana's Persian Kitchen | 15 Food Marquet |
| 7 Little Venice Cake Company | 16 Seascapes |
| 8 Gastronomy | 17 House of Desserts |
| 9 Malibu 90265 | 18 Royal Club Sea Lounge |

LEISURE & ENTERTAINMENT

- | | |
|-------------------------|------------------------------------|
| 1 Skyblaze Fountain | 7 Atlantis Explorers Club |
| 2 Aquaventure Waterpark | 8 Royal Galleria / Royal Promenade |
| 3 Royal Pool | 9 Watersports Beach Hut |
| 4 AWAKEN Wellness | 10 Nobu by the Beach Pool |
| 5 Royal Beach | 11 Private Residences Pool |
| 6 Tennis Courts | |

GUEST SERVICES

- | | |
|---------------|------------------------|
| 1 Hotel Lobby | 4 Medical Clinic |
| 2 Reception | 5 VIP Welcome Lounge |
| 3 Concierge | 6 Resort Activity Desk |

POINTS OF INTEREST

- | | |
|--------------|------------------------|
| Washrooms | Express Buggy Stop |
| ATM | Aquaventure Buggy Stop |
| Prayer Rooms | Shuttle Pick-up Point |



ATLANTIS

DUBAI

For more information, please email groups@atlantisdubai.com