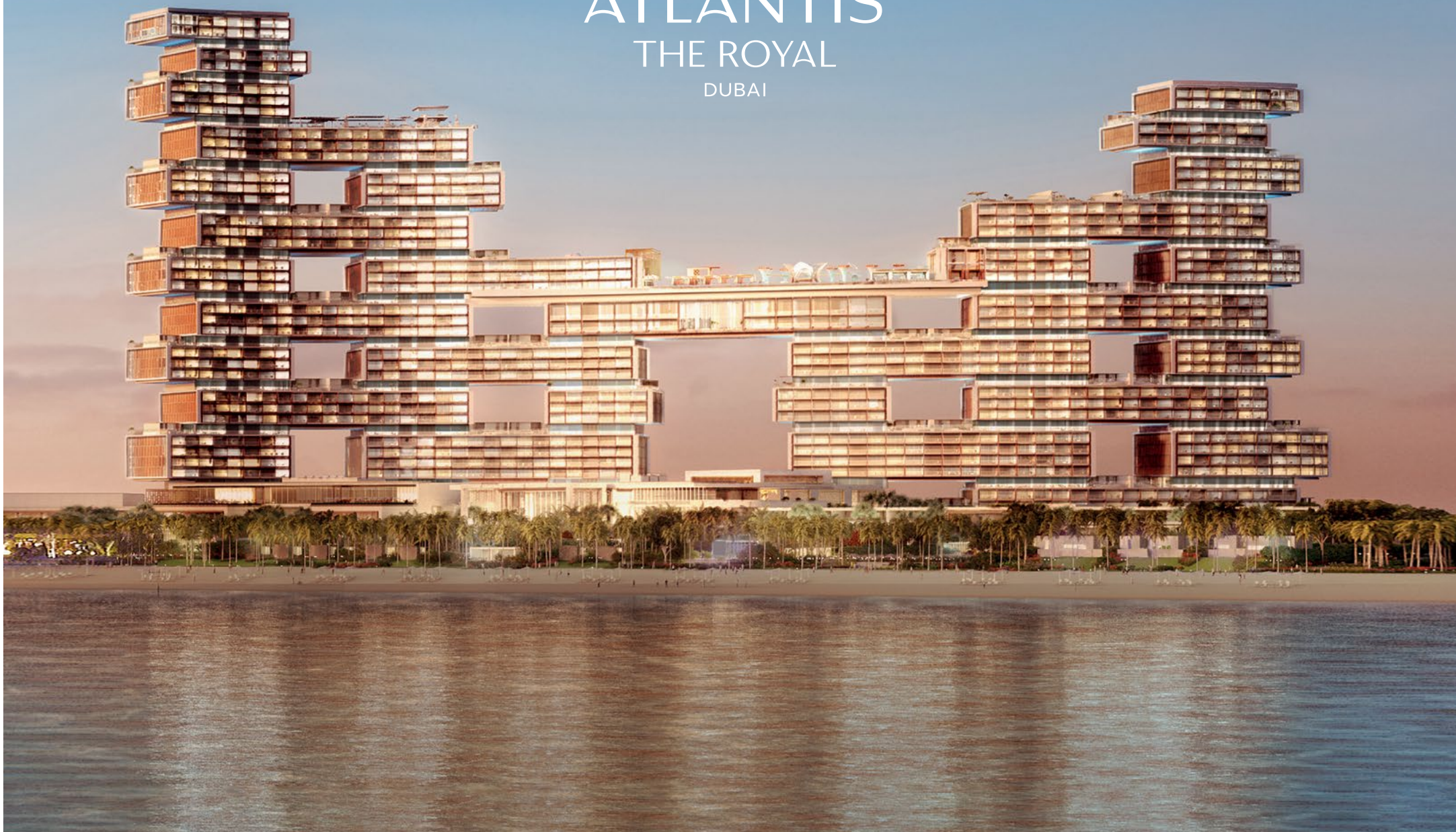




ATLANTIS

THE ROYAL

DUBAI



WHERE THE IMPOSSIBLE BECOMES POSSIBLE

A new iconic landmark, where the sea meets the sky, Atlantis The Royal surges 43 storeys high and combines a chic city aesthetic with the shimmering cyan waters of the Arabian Sea. Crafted by the world's leading designers, architects and artists, the resort celebrates Dubai's contemporary heritage, where daring architecture lends itself to an upscale stay with dazzling surprises around every corner.

Crowned by a 90-metre sky pool, Atlantis The Royal takes guests on a sensorial journey with unique rooms, 17 world-class restaurants – including 8 helmed by celebrity chefs – a 3,000m² wellness centre and a surreal lobby where more than 4,000 alluring jellyfish glide through the world's largest jellyfish tank.

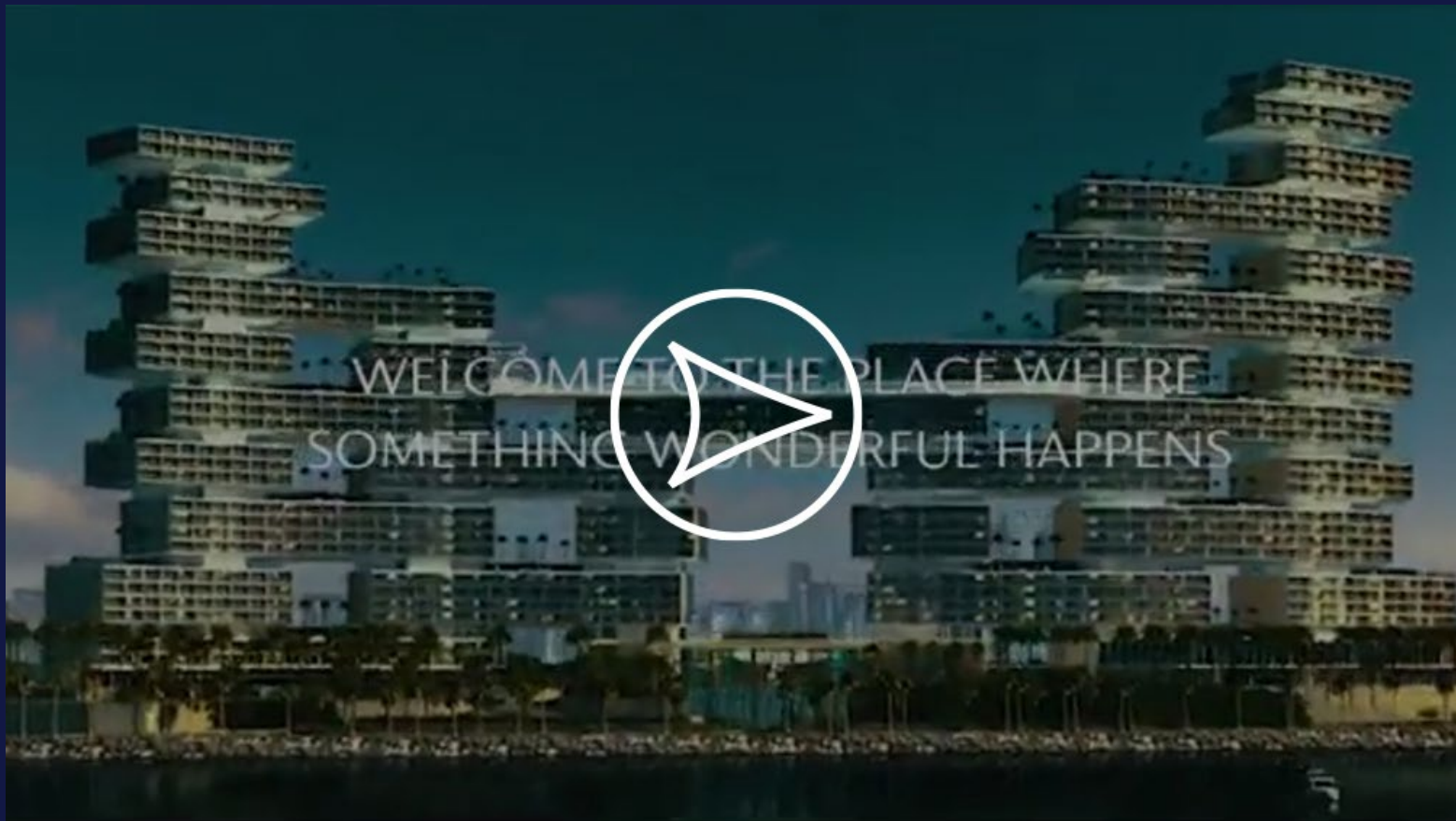
Guests can plunge into extraordinary pools, soak up the rays on a sun-kissed private beach, unlock their spiritual alchemy in a divine spa, get swept away on a culinary escapade and dawn their finest resort wear to feel the magnetic pull of the pulsating night life.

Alluring. Stirring. Electrifying.

Atlantis The Royal – A World Beyond



WHERE THE IMPOSSIBLE BECOMES POSSIBLE



WAKE INTO ANOTHER WORLD

Atlantis The Royal is home to some of the most elegant Rooms and Suites in Dubai. Soaring 43 storeys (185 metres) above sea level, they represent the absolute pinnacle of modern contemporary opulence, designed to immerse guests in absolute comfort and unparalleled luxury. Each Guest Room, Suite and Signature Penthouse delivers extraordinary luxury with bespoke amenities, walk-in wardrobes and dressing rooms, walk-in showers and stand-alone bathtubs, as well as some of the world's most breathtaking views.

SIGNATURE PENTHOUSES

Experience the world's most iconic stay in Atlantis The Royal's Signature Penthouses. With hand-crafted décor, elevated service and bespoke amenities, guests will never want to stay anywhere else. With private infinity pools and expansive terraces, something incredible happens at every stay. Bedrooms and bathrooms are built for royalty, while the lounge and dining areas deliver that right-at-home feeling. These dream Signature Penthouses are kingdoms made of surprises, adventure and opulence all in one, unlike anywhere else in the world



ROYAL MANSION - MAJLIS

SIGNATURE PENTHOUSES

ROYAL MANSION

1,128m² split-level 3-bedroom Penthouse with private lift, terrace, swimming pool & outdoor kitchen

The Royal Mansion is the jewel in the crown of Atlantis The Royal, lending itself perfectly to those seeking the ultimate in privacy and luxury. This 3-bedroom split-level Penthouse is the most exclusive stay in Dubai. A lift dedicated to the Royal Mansion transports guests from their private basement entrance into a majestic private foyer studded with 100-year-old olive trees and double height ceilings.

Imagined for celebrations in the sky, the Royal Mansion is home to a mix of entertainment areas, including a magnificent private terrace with expansive sea and skyline views, glistening infinity pool, and outdoor kitchen. Every detail of the Royal Mansion is designed to make guests feel like royalty, from the dedicated butler service through to the Suites decorative elements such as a private 10-seater sunken Majlis and soothing water features, and the bespoke in-room amenities exclusively made for Atlantis The Royal



PANORAMIC PENTHOUSE - BATHROOM

PANORAMIC PENTHOUSE

520m² 2-bedroom Penthouse + 209m² wraparound terrace with pool

The Panoramic Penthouse redefines luxury living. Located on the highest floor of the Sunset Tower, it affords 360° views across Dubai and the Arabian Sea. Highlights include a 209m² wraparound terrace with private infinity pool, a spacious living room area, floor-to-ceiling windows and a freestanding bathtub in the master bedroom.

Delivering some of the best views on earth, the Panoramic Penthouse is the ideal entertainment space with its elegant 14-seat dining room and private kitchen. With possible connections to the 42nd floor, a stay in the Panoramic Penthouse includes a dedicated butler to take care of every detail, including arranging in-room dining experiences from our signature restaurants.

SIGNATURE PENTHOUSES



HORIZON PENTHOUSE - BEDROOM



SKYSCAPE PENTHOUSE - TERRACE

HORIZON PENTHOUSE

261m² 1-bedroom Penthouse + 207m² wraparound terrace with pool

Time lingers between the sea and the sky in the Horizon Penthouse. This is one of the most desirable addresses in the world. The Horizon Penthouse is fitted with a private infinity pool and terrace with lounge areas and a dining table for intimate al fresco dinners. Aside from the show-stopping exterior space, the interior, complete with a marble Art Déco inspired bar, exudes refined Hollywood glamour. Every detail counts, that's why the Horizon Penthouse is appointed with bespoke amenities.

The space lends itself perfectly to group getaways, with options to privatise the 41st floor entirely. A home away from home, guests have access to a dedicated butler who will take care of every detail, including private dining experiences delivered to the Horizon Penthouse from Atlantis The Royal's signature restaurants

SKYSCAPE PENTHOUSE

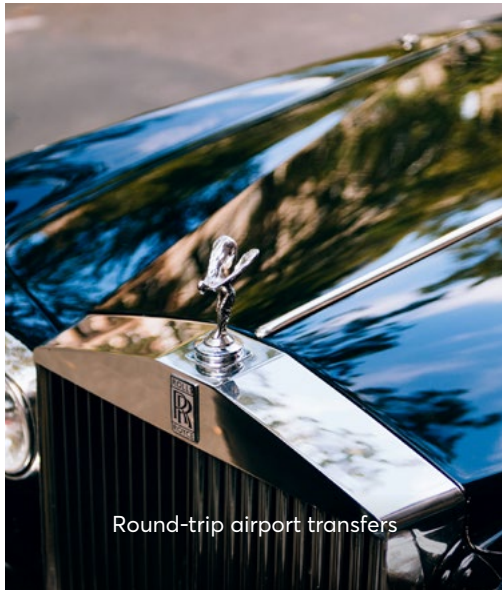
185m² split-level 1-bedroom Penthouse + 336m² terrace with pool

The Skyscape Penthouse is a stunning 2-floor palatial haven with floor-to-ceiling glass windows, an expansive 336m² terrace, infinity pool and dining table that can seat 8 for private al fresco soirées.

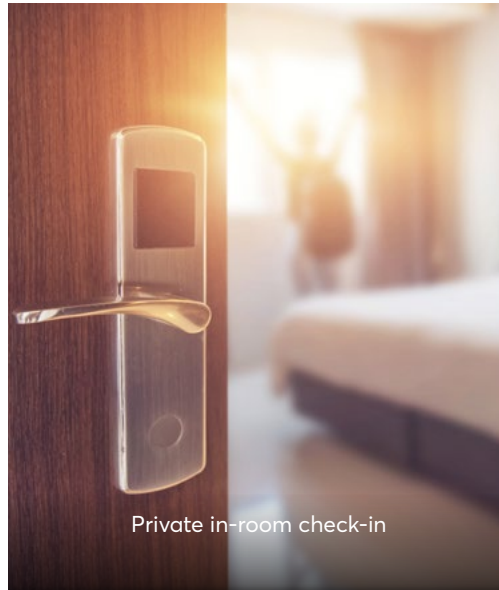
The Skyscape Penthouse offers plenty of different lounging options together with dedicated living and dining areas and separate pantry. With the option of privatising the whole floor, this is the perfect private sanctuary for groups of friends and families.

SIGNATURE PENTHOUSES

BENEFITS



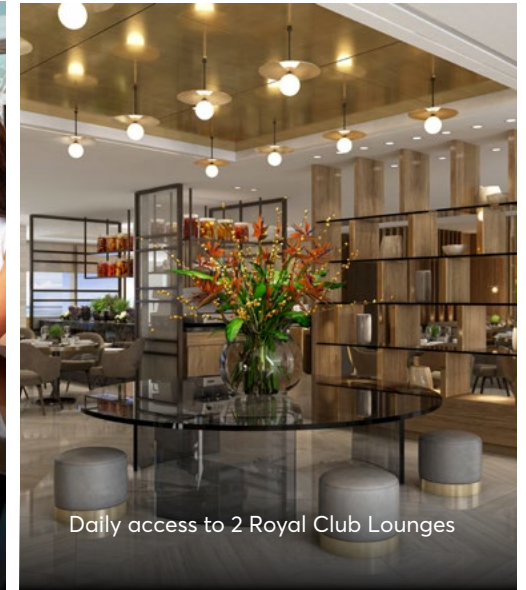
Round-trip airport transfers



Private in-room check-in



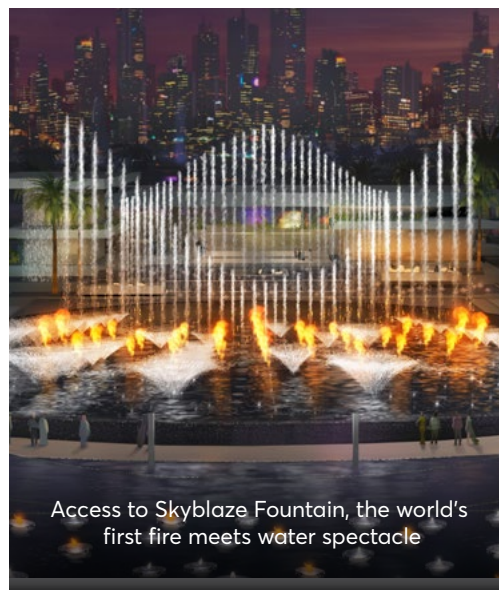
Dedicated 24-hour butler services



Daily access to 2 Royal Club Lounges



Daily access to The Lost Chambers Aquarium and Aquaventure Waterpark with AquaXpress access



Access to Skyblaze Fountain, the world's first fire meets water spectacle



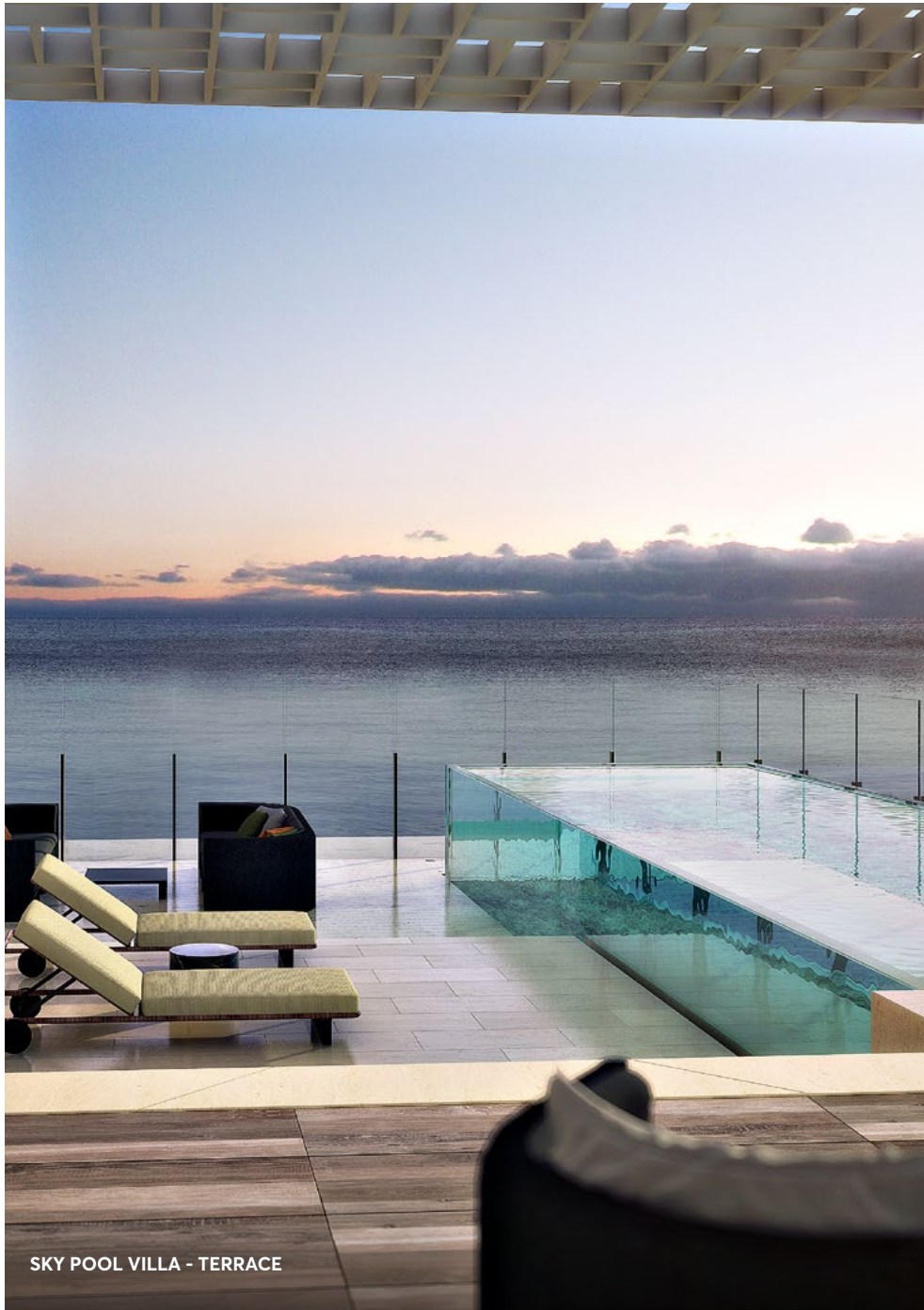
Exclusive in-room dining experiences from signature celebrity chef restaurants and daily breakfast in bed



Complimentary access to AWAKEN Fitness including thermal facilities and lap pool

SUITES

Experience the pinnacle of comfort in one of Atlantis The Royal's magnificent Suites. Expect private luxury living in one of 96 Suites with private lounge and dining areas, terraces, infinity pools and elevated service.



SKY POOL VILLA - TERRACE

SUITES

Private luxury living is elevated in an Atlantis The Royal Suite. Guests can choose between endless views of the glittering Arabian Sea and Dubai skyline, with both sea and Palm views available from the private terrace. With 44 Suites featuring temperature-controlled infinity pools, relaxation is at ones fingertips.

Our Suites feature gleaming marble bathrooms with separate shower and stand-alone bath, and highly covetable walk-in wardrobes and dressing rooms. With daily complimentary breakfast in bed and curated in-room dining experiences from our signature restaurants to choose from, Suite guests receive personalised experiences to surprise and delight with the help of a dedicated butler on hand 24 hours a day.

SKY POOL VILLA

118m² Suite, with a terrace from 168m² and infinity pool

With a private infinity pool allowing guests to gaze over the serene sea, the Sky Pool Villa is dream-worthy. The expansive terrace features 2 sun loungers, a swing chair and dining table that can seat 6, creating the perfect setting for an al fresco dinner with friends.

The Sky Pool Villa features a large airy living and dining area, as well as a separate pantry and guest toilet. Highlights include an imperial marble bathroom, with separate his and her sections, as well as a dressing room and walk-in wardrobe. Connecting options are available to another Sky Pool Villa or 2 Queen Rooms, making it ideal for those travelling with friends or family. The Sky Pool Villa comes with a dedicated butler to deliver personalised experiences to meet every guest need.





SKY VIEW SUITE - BEDROOM

SUITES

SKY TERRACE SUITE

117m² Suite, with a terrace from 16m²

This Suite's expansive terrace is the perfect spot to soak up sunrises and sunsets. It immerses guests into endless views of the Arabian Sea and the equally impressive Palm Island with both sea and Palm views available.

Featuring separate dining and living areas, private pantry and guest toilet, the Sky Terrace Suite is perfect for families and larger parties. The Suite features a gleaming marble bathroom with separate shower and stand-alone bath, and the highly coveted walk-in wardrobe and dressing room. With curated in-room dining experiences from signature restaurants to choose from, Suite guests receive personalised experiences to surprise and delight with the help of a dedicated butler, who is always on hand.

SKY VIEW SUITE

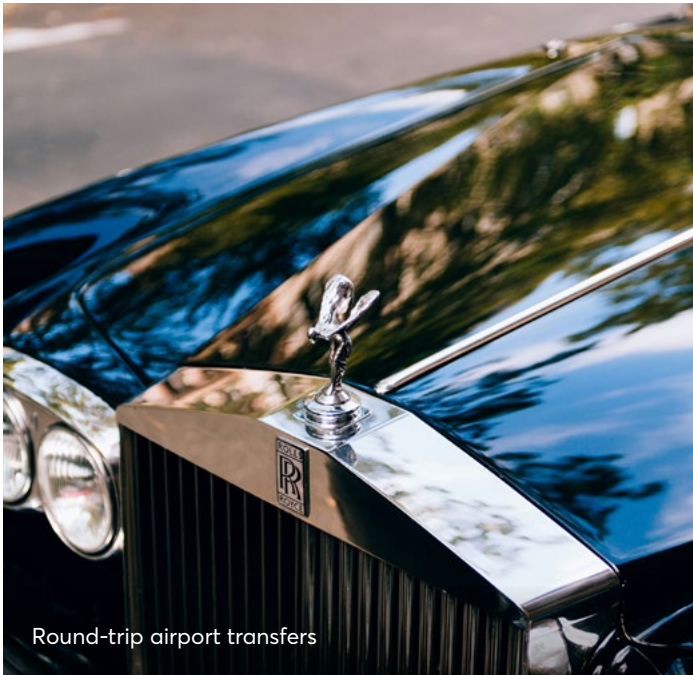
78m² Suite, with a terrace of 18m²

Ideal for couples, Atlantis The Royal's 8 Sky View Suites come with a separate living room and large private terrace delivering panoramic views over the Palm Island and the glistening Dubai skyline.

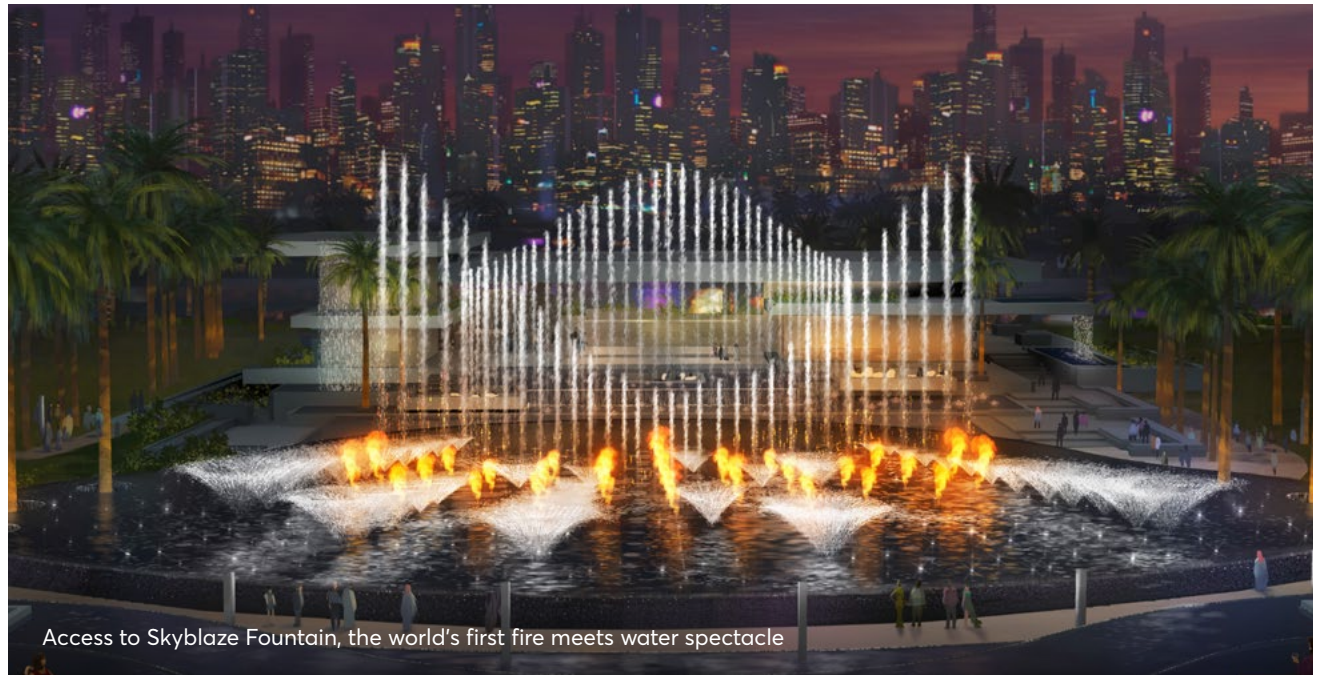
The luxurious marble bathroom is fitted with a separate shower and stand-alone bath alongside the dressing room and walk-in wardrobe. The Sky View Suite's crowning glory is round-the-clock butler service ensuring all guests' wishes come true.



SUITES BENEFITS



Round-trip airport transfers



Access to Skyblaze Fountain, the world's first fire meets water spectacle



Dedicated 24-hour butler services
and in-room check-in



Exclusive in-room dining experiences from
signature celebrity chef restaurants and
daily breakfast in bed



Daily access to two Royal Club Lounges



Daily access to
Aquaventure Waterpark and
The Lost Chambers Aquarium

ROYAL CLUB ROOMS

The perfect retreat for couples or families who adore the high life. Treat your guests to some of the most majestic views in the city and access to private lounges. A stay in one of the Royal Club rooms opens the door to a world of exclusive benefits.



ROYAL CLUB KING - BEDROOM

ROYAL CLUB

Royal Club guests enjoy exclusive all-day access to 2 private Royal Club Lounges for complimentary afternoon tea and evening drinks. Access to butler services, and daily access to Atlantis Explorers Club further elevates a Royal Club stay.

Royal Club rooms treat guests to some of the most majestic views in the city from a private balcony with both Arabian Sea and Palm Island facing rooms available. Beyond affording guests the added luxury of a walk-in wardrobe, stand-alone bath and separate shower, Royal Club rooms also feature floor-to-ceiling windows and luxurious king or queen beds, perfect for couples or families. Royal Club guests enjoy exclusive access to 2 private Royal Club Lounges for complimentary afternoon tea and evening drinks. Exclusive access to dedicated butler service further elevates the Royal Club stay.



ROYAL CLUB QUEEN - BATHROOM

ROYAL CLUB KING

55m² + 9m² balcony

The Royal Club King comes with a spacious king size bed and endless views across the serene Arabian Sea or the iconic Palm Island. Royal Club guests are entitled to exclusive Royal Club benefits across the resort.

ROYAL CLUB QUEEN

55m² + 9m² balcony

The Royal Club Queen comes with a spacious queen size bed and endless views across the serene Arabian Sea or the iconic Palm Island. Royal Club guests are entitled to exclusive Royal Club benefits across the resort.



ROYAL CLUB SKY LOUNGE (ADULTS ONLY)

ROYAL CLUB LOUNGE

Royal Club guests enjoy exclusive all-day access to 2 private lounges for complimentary afternoon tea and evening cocktails. Overlooking the resorts striking pools from its expansive terrace, the Royal Club Sea Lounge on the lower ground floor is the perfect place to plan the days activities, while the adults-only Royal Club Sky Lounge on the 22nd floor, delivers breathtaking views of the dazzling Dubai skyline and Arabian Sea – the ideal setting for a sunset aperitif.



ROYAL CLUB SEA LOUNGE (FAMILY FRIENDLY)

BENEFITS



Daily access to Aquaventure Waterpark and The Lost Chamber Aquarium



Daily access to Atlantis Explorers Club for the children



Access to Skyblaze Fountain, the world's first fire meets water spectacle



Dedicated 24-hour butler services and in-room check-in



Complimentary access to AWAKEN Fitness including thermal facilities and lap pool

GUEST ROOMS

Delivering breathtaking views over the Arabian Sea or the Palm Island or the Dubai skyline, the Seascape and Palmscape rooms are a masterclass of sophistication.

The rooms come with king or queen bedding and have connecting options to additional Guest Rooms and Suites to complement all holiday needs.



SEASCAPE KING - BEDROOM

GUEST ROOMS

A masterclass of sophistication, the Seascape and Palmscape rooms deliver breathtaking views over the Arabian Sea or the iconic Palm Island and Dubai skyline from private balconies.

These rooms have connecting options and feature king or queen bedding to complement all guest needs. Highlights include a walk-in wardrobe and dressing room, adjustable mood lighting, bathrooms featuring a walk-in shower with stand-alone bathtub and smart 'privacy glass', as well as bespoke amenities. Guest Rooms come with the option of connecting a king room with a queen room to create a 2-bedroom Family Room for families and smaller groups.

PALMSCAPE KING

55m² + 9m² balcony

Captivating views of the Palm Island make for an iconic Dubai experience. The Palmscape King comes with views of the Palm Island and glittering Dubai skyline and includes a spacious king size bed.

PALMSCAPE QUEEN

55m² + 9m² balcony

Breath-taking by day and dazzling by night, make the most of Atlantis The Royal's exclusive vantage point on the crescent of The Palm. The Palmscape Queen comes with views of the Palm Island and 2 queen size beds.

SEASCAPE KING

55m² + 9m² balcony

Let the soothing sight of shimmering water lift your senses. The Seascape King comes with endless views of the Arabian Sea and a spacious king size bed.

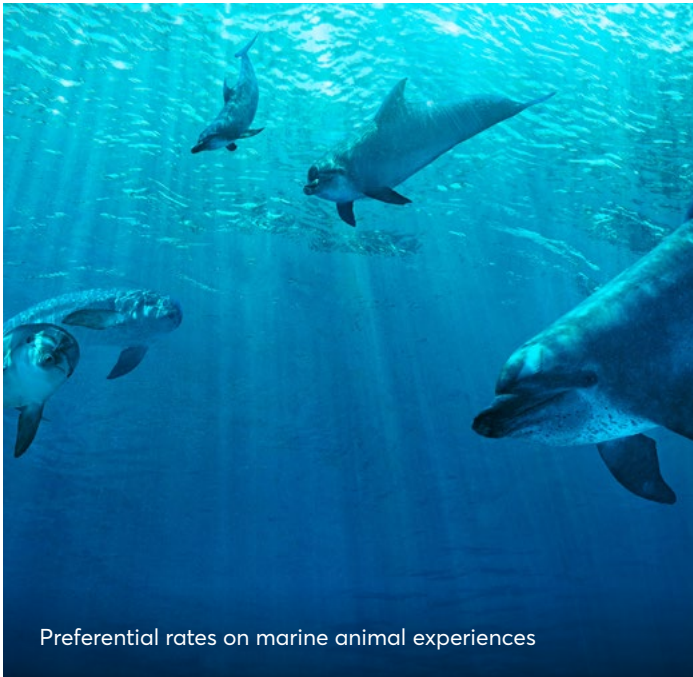
SEASCAPE QUEEN

55m² + 9m² balcony

Soak-in the views of the deep blue waters of the Arabian Sea. The Seascape Queen comes with unobstructed views of the Arabian Sea and 2 queen size beds.

GUEST ROOMS

BENEFITS



Preferential rates on marine animal experiences



Daily access to Aquaventure Waterpark



Half-board accessibility and dining experiences across Atlantis Dubai



Complimentary access to AWAKEN Fitness



Access to Skyblaze Fountain, the world's first fire meets water spectacle



Daily access to The Lost Chambers Aquarium



DUBAI'S PREMIER DINING DESTINATION

Prepare your senses for a set of experiences that will raise expectations of what a culinary destination should be. The world's most decorated chefs bring their individual mastery to Atlantis The Royal.

From Heston Blumenthal's Michelin-starred creations, homestyle Iranian cuisine with celebrity chef Ariana Bundy to tempting tapas from José Andrés, Atlantis The Royal takes dining to new heights.



DINNER BY HESTON BLUMENTHAL

The taste of British nostalgia meets the future with a modern dining British experience informed by the past. Michelin-star Chef Heston Blumenthal OBE, a professor of his craft celebrated worldwide as one of the most progressive chefs of his time, offers a multi-sensory cuisine, food pairing and flavour encapsulation. Expect signature flair including meat fruit, spiced pigeon, the tipsy cake and nitrogen ice cream.

All dishes are accompanied by an eclectic selection of global wines, with a lively cocktail bar offering a bespoke range of drinks, distillations and infusions. Experiential dining at its best, expect the unexpected.

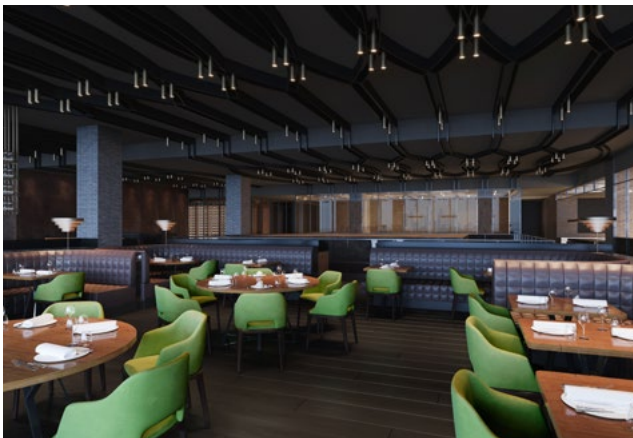
Operating Hours:

Dinner, daily

Seating Capacity: 204 guests

Indoor: 158 guests

Outdoor: 46 guests





MILOS

Fresh from the Greek isles, flavours have been transported to Dubai's legendary Palm Island. Gaze over fire fountains and vast skylines while savouring the taste of the Mediterranean. Simplicity meets sophistication with sharing style, the day's freshest catches and a raw bar including Greek wild oysters, and whole-fish sashimi and tartare.

The man credited with introducing high-end Hellenic food, wine and hospitality from Greece to North America, Costas Spiliadis, is celebrated for honouring the purity of ingredients. estiatorio Milos presents the definitive Dubai Greek blend with a view that will make jaws drop.

Operating Hours:

Lunch & Dinner, daily

Seating Capacity: 345 guests

Indoor: 169 guests

Outdoor: 176 guests





LA MAR

Presented by Gastón Acurio, the very man charged with transforming the western South American country into a culinary hotspot, La Mar delivers a distinctive culinary experience ranging from upscale Sabores Autenticos to Peruvian fine dining with authentic flavours and traditional seafood ceviche.

Taste signature fresh-from-the-sea ceviches, chargrilled anticuchos and speciality cocktails – served in a chic setting with spectacular views across the Palm. With recipes passed down from mothers – and their mothers – sit back and enjoy an auténtico voyage across Peru.

Operating Hours:

Dinner, daily

Seating Capacity: 187 guests

Indoor: 131 guests

Outdoor: 56 guests





JALEO

At Jaleo, plates are designed to be shared and enjoyed with good friends and great conversation. Created by Chef José Andrés, the only chef globally to have a two Michelin-star restaurant, four Bib Gourmands and holder of a Nobel Peace Prize, Jaleo highlights the rich regional diversity of Spanish cuisine, recreating his favourite childhood dishes with finesse. Presenting a menu of signature tapas, hearty paellas, summery sangrias, and a selection of the finest Spanish cheeses, wines, and sherries. Legacy and whimsy in one bite, taste an experience that will stay with you forever.



Operating Hours:

Brunch, Lunch & Dinner, 6 days per week

Seating Capacity: 254 pax

Indoor: 155 pax

Outdoor: 99 pax





ARIANA'S PERSIAN KITCHEN

Be swept away into a mystical world of perfumed Persian delights, where fruits, nuts and floral fragrances merge magnificently with meats, grains and vegetables. The debut restaurant and female-led concept by celebrity chef Ariana Bundy is a fresh, modern take on Iranian cuisine, serving Persian classics spun with a refreshingly modern twist. Star dishes include Caspian-style filet kebab, rose-scented sea bass, and Ariana's take on classic Persian ice cream. Meals are complemented by creative cordials and traditional Persian tea for colourful, stunningly complex flavours in an exotic setting.

Operating Hours:

Dinner, 6 days per week

Seating Capacity: 164 pax

Indoor: 108 pax

Outdoor: 56 pax





LITTLE VENICE CAKE COMPANY

From Downton Abbey to Buckingham Palace, Little Venice Cake Company has created cakes for celebrities and international royalty including Her Majesty The Queen, Pierce Brosnan, Sir Paul McCartney, Emma Thompson, Sharon and Ozzy Osbourne, Gordon Ramsay and David Beckham.

Mich Turner, a pioneer in the baking world, founded the company in 1999 and her award-winning designs continue to be the inspiration for many.

Operating Hours:
7 days per week





GASTRONOMY

Inspired by tales and tastes from around the globe, our masterful chefs visit markets, farms and piers daily to handpick the freshest ingredients before gathering to trade culinary secrets passed down through generations. They retreat to the kitchens and begin to work their delicious magic for all to enjoy.

Operating Hours:

Brunch & Dinner, 7 days per week

Seating Capacity: 960 pax

Indoor: 650 pax

Outdoor: 310 pax



MALIBU 90265

Malibu 90265 is the place to dine, drink and groove through the dazzling world of 1950s America. Guests can pull up a chair at the gleaming bar counter and select from a wide array of American diner classics such as handcrafted burgers, stacked pancakes, grilled steaks, lobster rolls, milkshakes, sundaes, soda floats and so much more.

The diner transports guests to bygone eras with sounds of the 50's, 60's and 70's emanating from Malibu 90265's retro Jukebox, with hundreds of songs available on the 45" Vinyl Collection.

Operating Hours:

Lunch & Dinner, 6 days per week

Seating Capacity: 114 pax

Indoor: 96 pax

Outdoor: 18 pax



THE ROYAL TEAROOM

One of life's finest pleasures, taking tea at The Royal Tearoom is the true definition of a day well spent. Surrounded in luxury and the most delectable pastries in Dubai, The Royal Tearoom offers guests an extensive range of teas, and coffees.

Paired with a selection of finger sandwiches, traditional sweets, and a tremendous variety of cakes and pastries, an afternoon spent here is an extraordinary experience delivering a comforting warmth that only a perfectly made cup of tea could afford.

Operating Hours:

Breakfast, Lunch, Afternoon Tea & Dinner, 7 days per week

Seating Capacity: 314 pax

Indoor: 118 pax

Outdoor: 196 pax





HOUSE OF DESSERT

House of Desserts is the perfect stop for a quick midday indulgence. This vibrant dessert café serves a variety of small cakes, expertly crafted desserts, sweets and candies, and is your destination for that perfect cup of coffee. Be tempted by a dazzling array of delicate cakes, flakey croissants, chocolates, and much more. Bring the feeling home, with a take awaybox to share with family and friends.

With its charming and modern aesthetic, be entertained with the interactive showmanship of House of Desserts theatrical food preparations. Custom designed leather banquettes, sculptural marble tables, and balloon installations which seemingly float to the ceiling, embrace you into the blissful ambience, leaving you with smiles for days.

Operating Hours:

Lunch, 7 days per week



FOOD MARQUET

Food Marquet brings culinary worlds together in one awe-inspiring open air venue. With light street foods, grilled delicacies and gourmet burgers, through to Neapolitan and Chicago-style pizzas and the vibrant tastes of Mexico and its coastlines, Food Marquet is unparalleled. The ultimate flavour haven, it is a one-of-a-kind lunch spot in Dubai.

Operating Hours:

Lunch, 7 days per week

Seating Capacity: 170 pax

Outdoor: 170 pax



ENTERTAINMENT



NIGHTLIFE & BEYOND

Lose yourself to next level entertainment across the resort from the Skyblaze Fountain to Cloud 22 Skypool, experience something extraordinary in every corner.



CLOUD 22

As the golden sun moves across the horizon, the vibe becomes just that much more electrifying. Lights burst to life and the music goes up a notch. The ambience is steeped in unconventional extravagance, imagination and cutting-edge sophistication.

The place to be seen when it comes to sky high drinks in one of the hippest cities on the planet, Cloud 22 transports guests to another realm. At 22 stories above sea level, guests can enjoy the sparkling infinity pool and views over the iconic Palm Island, Dubai's captivating skyline and the Arabian Sea. From sipping cocktails at the Lotus Bar, to settling in to one of 15 private cabanas or opting for the VVIP cabana with a private pool and dancing to the DJ's flawlessly mixed set, Cloud 22 makes for the perfect day out.



Operating Hours:
Lunch, daily

Seating Capacity: 368 guests
Indoor: 66 guests
Outdoor: 302 guests





NOBU BY THE BEACH

Nobu by the Beach delivers the unique chemistry and perfect balance of luxury and lifestyle. The setting merges the modern architecture of Dubai's newest icon with an intuitive interpretation of Chef Nobu's signature style. The venue draws upon Japanese architecture and the oceanfront location to evoke a contemporary Japanese beach house in a setting complete with Nobu private pool and beach.

Experience an extensive menu of inventive Japanese cuisine with Peruvian influence, paired with bold cocktails and an energising atmosphere. Nobu by the Beach is the perfect place to enjoy an upscale cabana experience, a leisurely lunch by the sea, a sunset aperitivo or a one-of-a-kind beach day.

Operating Hours:

Lunch & Dinner, daily

Seating Capacity: 143 guests

Indoor: 61 guests

Outdoor: 82 guests



POOLS AND BEACHES

With Cloud 22 sky pool overlooking the Dubai skyline and Palm Island, 2 guest pools, 1 kids pool and an uninterrupted stretch of golden sand beach at your disposal, you can choose how you'd like to while-away the hours.

If a fun-loving day of sunshine with the family is what you have planned, the Starfish and Royal pools are child and family-friendly and for everyone to enjoy. If you're looking to lounge in pure luxury or you're in a day-time party mood, the Nobu by the Beach pool, available to adults only, is the perfect place to spend your day.

With over 2 kilometres of beachfront between Atlantis The Royal and Atlantis, The Palm, you'll enjoy strolling along the largest continuous stretch of accessible, private beach in Dubai.



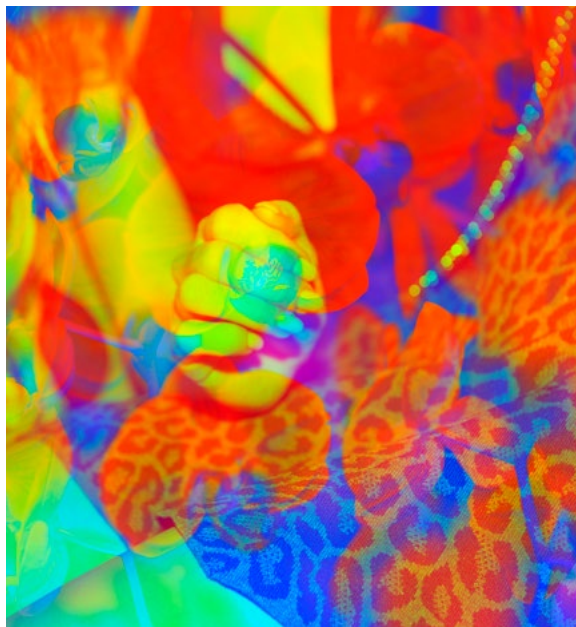
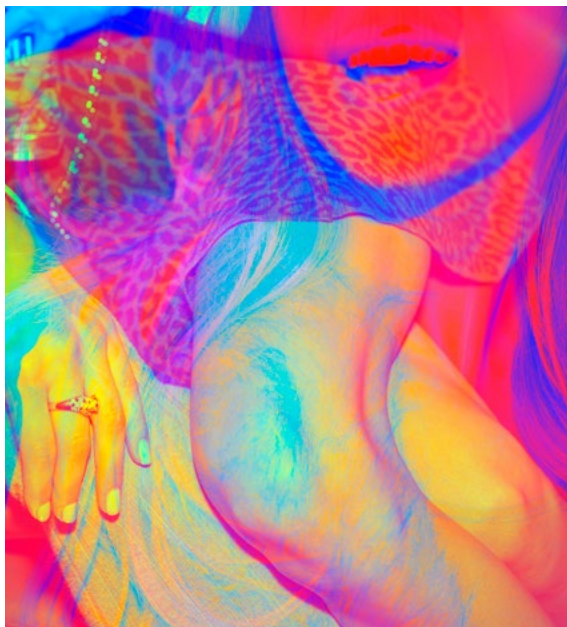
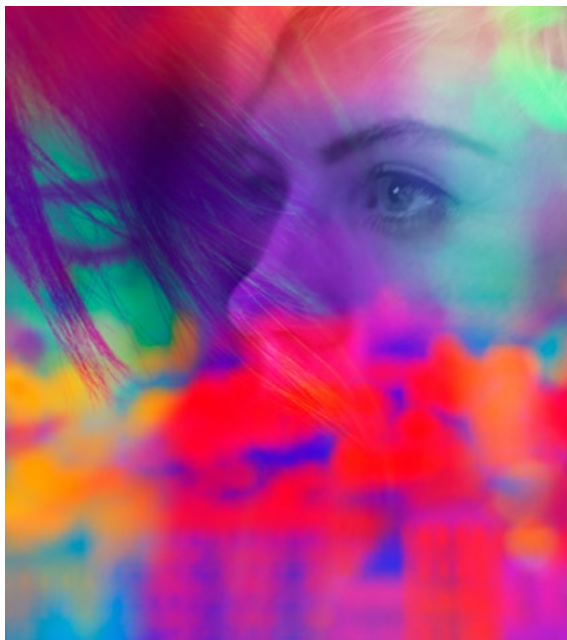
RESONANCE

BY HESTON BLUMENTHAL

A sophisticated bar unlike anyone has ever experienced anywhere else in the world. Created by Michelin starred chef Heston Blumenthal and his love for molecular gastronomy, Resonance serves guests sights, sounds and tastes of epic proportions, all in the company of over 4000 alluring jellyfish gracefully gliding passed in one of the world's largest jellyfish tanks.

Operating Hours:
Night, daily

Seating Capacity: 189 guests
Indoor: 137 guests
Outdoor: 52 guests



LING LING

Overlooking the resort's 90-metre sky pool, a private elevator will whisk guests up to the 23rd floor, opening out to a restaurant serving fine Pan Asian cuisine, event space, expansive private dining room, lounge, and outdoor terraces, which boasts 180-degree panoramic views of the Palm, the Arabian Sea and Dubai's captivating skyline.

Ling Ling is more than a dining experience it's also a destination lounge which leads you from the day, into the evening, and then into the late night through signature tastes, sights and sounds. Evolving from drinking to dining to dancing, in no particular order. The menus are supported by stylish décor and set to an eclectic soundtrack designed to create an alluring ambiance for wherever the night might lead.

Operating Hours:

Dinner, daily

Seating Capacity: 380 guests

Indoor: 294 guests

Outdoor: 86 guests



SKYBLAZE FOUNTAIN

The world's first fire meets water show. Skyblaze Fountain, inspired by the elements, dramatically collides fire and water to create beautiful harmony.

Where columns of water burst skywards and rolling flames weave and dance through the skies. Skyblaze Fountain is a captivating experience for resort and restaurant guests, entralling audiences daily as delicate waves of cooling mist and the heat of the flames rush through the skies.

Operating Hours:
Daily, from sunset





ELEMENTS

Gaze over Skyblaze Fountain and shimmering water features surrounding Elements, the magnificent outdoor lobby terrace of Atlantis The Royal.

Be immersed by the sights and sounds of this awe-inspiring sight, while grabbing a bite to eat or enjoying an evening cocktail. The stepped reflecting pools of water are dotted with a myriad of crystalline WaterCandles that surround outdoor dining tables. Among this field of WaterCandles is a special group, each of which turns water to fire when touched with a real flame, creating mesmerising nighttime focal points to take your breath away.

Operating Hours:
Daily

Seating Capacity: 170 guests
Outdoor: 170 guests

ATLANTIS AQUAVENTURE





AQUAVENTURE WATERPARK

All stays at Atlantis The Royal include complimentary access to Atlantis Aquaventure, the largest waterpark in the world. Here guest will discover excitement the entire family can enjoy – with a total of 105 slides and attractions to get the hearts racing and private cabanas for that moment of calm. At Aquaventure Waterpark guests will find something to suit all thrill levels.

At 48-metres tall, Trident Tower (the newest and biggest) boasts 12 record-breaking slides. Guests can tackle the world's tallest waterslide of its kind on Odyssey of Terror, ride Shockwave, the longest family rafting water coaster in the world, or brave the tallest vertical drop body slide in the Middle East on Blackout.

Designed for endless hours of water-based fun, Splashers Lagoon and Splashers Cove feature 16 sensational slides and attractions and form the biggest kid's only waterpark area in the Middle East. Little ones will not want to leave.

For a gravity-defying feat, guests can head to Immortal Falls and encounter the region's first cliff jumping experience or ride the Raging Rapids and travel through an array of roaring water elements and zones of wave intensity.

There's always something new and exciting to experience when visiting Atlantis Aquaventure.



Operating Hours:

Daily from 10am to sunset

(Closing hours subject to change depending on the time of year)



@AquaventureDubai





THE LOST CHAMBERS AQUARIUM

The legend of Atlantis truly comes alive amidst the intriguing passageways and tunnels of The Lost Chambers Aquarium. With over 20 marine exhibits to explore, containing over 65,000 marine animals including piranhas, giant arapaimas, jellyfish and more, Atlantis is home to one of the largest marine habitats in the Middle East. Guests can enjoy guided tours, interactive shows and marine nursery. The Ambassador Lagoon provides a window into the ruins of the ancient city of Atlantis, mesmerizing guests as a stunning display of fishes, stingrays and agile sharks gracefully glide through the relics of this long-lost civilization.

Through The Lost Chambers Aquarium, the fascinating myth becomes a spectacular reality where guests can experience a true sense of wonder at this remarkable underwater world.

Activities

- ▶ Dive Discovery
- ▶ Ultimate Snorkel
- ▶ Aquatrek Xtreme
- ▶ Shark Safari
- ▶ Dive Explorer
- ▶ Predator Dive

Operating Hours:

Daily from 10am to sunset

(Closing hours subject to change depending on the time of year)





ATLAS VILLAGE

DOLPHIN EXPERIENCES

Since opening, resort guests and day visitors alike have delighted in interacting with the family of Indo-Pacific bottlenose dolphins calling Atlantis Dubai home. At 4.5 hectares Atlas Village boasts the largest coastal dolphin habitat in the world, with large crystal-clear lagoons, sandy beaches and a tropical setting, offering the perfect location for once-in-a-lifetime experiences.

From quick encounters in shallow water to swimming or snorkelling alongside dolphins and behind the scenes tours, each interaction begins with an introduction to dolphin training, physiology, and the importance of marine life conservation. Our aim is to build a life-long appreciation for marine life and encourage our guests to act on behalf of nature.

SEA LION EXPERIENCES

Imagine swimming with sea lions in a safe and indoor environment, a dream that can become a reality. With a range of interactive experiences, guests have the chance to get up close to these amazing marine mammals while being shown how we take care of them, helping to develop a greater appreciation and respect for marine life. This interaction takes place in shallow water and non-swimmers are welcome to participate.

Activities

- Dolphin Dip & Play
- Dolphin Swim & Explore
- Dolphin Trek
- Dolphin Meet & Greet
- Sea Lion Discovery
- Sea Lion Meet & Greet

Operating Hours:

Daily, from 10am to sunset
(Closing hours subject to change depending on the time of year)



GUEST ACTIVITIES





ATLANTIS EXPLORERS CLUB

Atlantis Explorers Club for children ages 4-12 offers a daily supervised education through group play.

With morning, afternoon and evening sessions, Atlantis Explorers Club offers recreational experiences tailored to age, interest and energy level.

Operating Hours:

Daily from 10am - 6pm

(Days & hours of operation are subject to change)

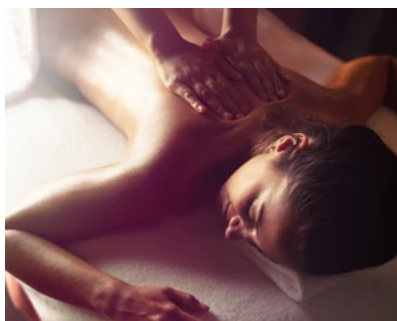
Rates & programmes available on request.





AWAKEN

ATLANTIS THE ROYAL



AWAKEN WELLNESS

Exclusive to Atlantis Resorts, AWAKEN is a truly different holistic spa and wellbeing experience designed to cleanse your body, clear your mind, lift your emotions and stir your spirit. Achieve inner harmony in the most luxurious and pleasurable setting imaginable and set the most potent and powerful version of yourself free.

The 3,000 square metre wellness haven is inspired by the elements. With 17 treatment rooms, a styling salon, and indoor and outdoor fitness space, this spectacular spa offers holistic therapies fused with modern technology and exclusive treatments that can only be found at AWAKEN. The 6 room Hammam Sensorium showcases traditional therapies in a new light setting the tone for an unforgettable sensory journey.

Rebalance and expand your spa experience with AWAKEN's signature range of products, allowing you to unlock your inner self and progress in your personal journey. With a wide variety of treatment offerings and fitness programmes to suit everyone's needs and preferences AWAKEN is where you step away from your day-to-day and reconnect with yourself.

Operating Hours:

➤ AWAKEN SPA	9am – 9pm
➤ AWAKEN FITNESS	6am – 9pm
➤ AWAKEN TERRACE	6am – 9pm
➤ ALKEMY PERSONAL STYLING	9am – 9pm



DOWNLOAD OUR MEDIA LIBRARY

To access imagery and videos, visit: [World of Atlantis](#)



Atlantis The Royal



Architecture



Lobby - Droplets Sculpture



Lobby



Lobby Bar



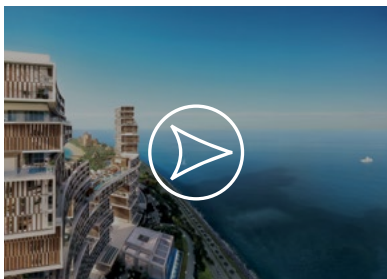
Porte Cochere



VIP Majlis



VIP Check-in Lounge



Concept Video

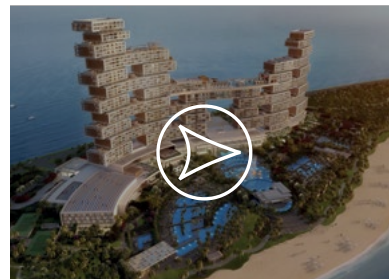


Image Slide Show



Product Video



AWAKEN Brand Video

DOWNLOAD OUR MEDIA LIBRARY

To access imagery and videos, visit: [World of Atlantis](#)



Seascape Room



Palmscape Room



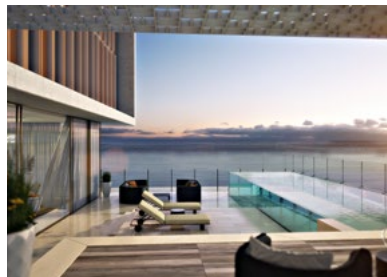
Guest Room Bathroom



Sky View Suite



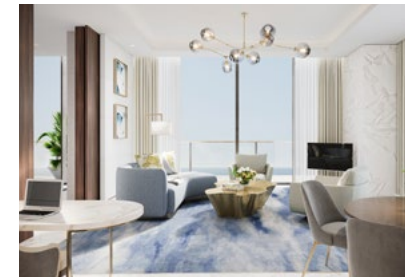
Sky Pool Villa



Sky Pool Villa - Pool



Sky Pool Villa - Living Room



Sky Terrace Suite



Sky Terrace Suite - Bathroom



Skyscape Penthouse - Terrace & Pool



Skyscape Penthouse - Bedroom



Skyscape Penthouse - Living Room

DOWNLOAD OUR MEDIA LIBRARY

To access imagery and videos, visit: [World of Atlantis](#)



Panoramic Penthouse



Panoramic Penthouse - Bedroom



Panoramic Penthouse - Bathroom



Horizon Penthouse



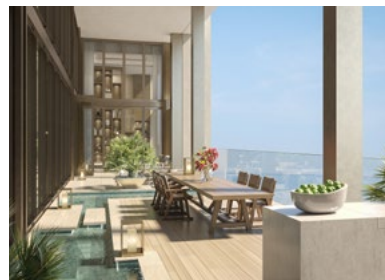
Horizon Penthouse - Bedroom



Royal Mansion



Royal Mansion - Bedroom



Royal Mansion - Terrace



Royal Mansion - Family Room

DOWNLOAD OUR MEDIA LIBRARY

To access imagery and videos, visit: [World of Atlantis](#)



Nobu by the Beach pool



Nobu by the Beach pool side view



Beach



AWAKEN Wellness - Hammam
Sensorium



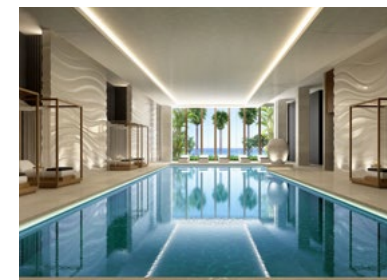
Royal Club Sky Lounge



Royal Club Sky Lounge - Bar



Royal Club Sea Lounge



AWAKEN Wellness - Lap Pool

DOWNLOAD OUR MEDIA LIBRARY

To access imagery and videos, visit: [World of Atlantis](#)



Dinner By Heston Blumenthal



Heston Blumenthal



La Mar by Gastón Acurio



Gastón Acurio



Jaleo by José Andrés



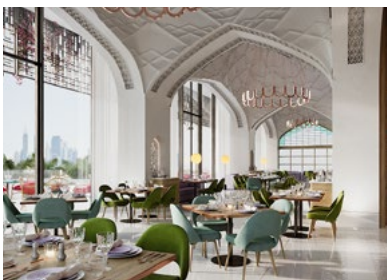
José Andrés



Milos by Costas Spiliadis



Costas Spiliadis



Ariana's Persian Kitchen



Ariana Bundy



Little Venice Cake Company



Mich Turner

DOWNLOAD OUR MEDIA LIBRARY

To access imagery and videos, visit: [World of Atlantis](#)



Gastronomy



Malibu 90265



Ling Ling by Hakkasan



Ling Ling - Bar Lounge



Cloud 22



Cloud 22



Skyblaze Fountain



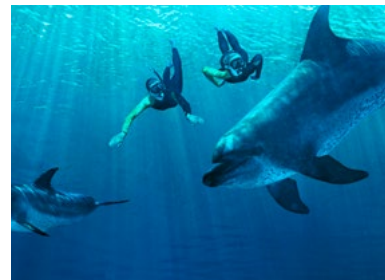
Aquaventure Beach



Aquaventure Waterpark



The Lost Chambers Aquarium



Dolphin Dive Discovery



ATLANTIS

THE ROYAL

DUBAI

For more information, please contact your preferred travel partner or email us at **SalesSupport@atlantisdubai.com**

For reservations, please contact **Reservations@atlantisdubai.com**

To access fact sheets and press releases, visit:
[Kerzner Communications](#)